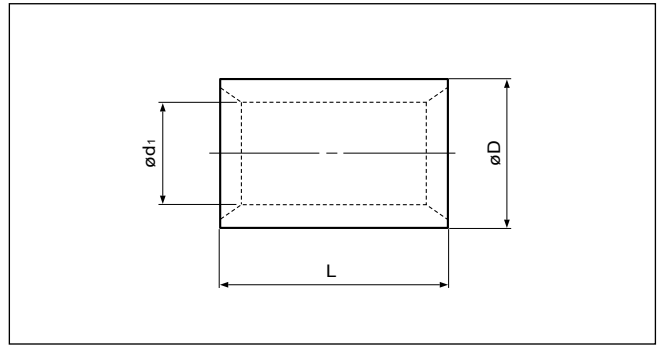


Solderless splices

PARALLEL

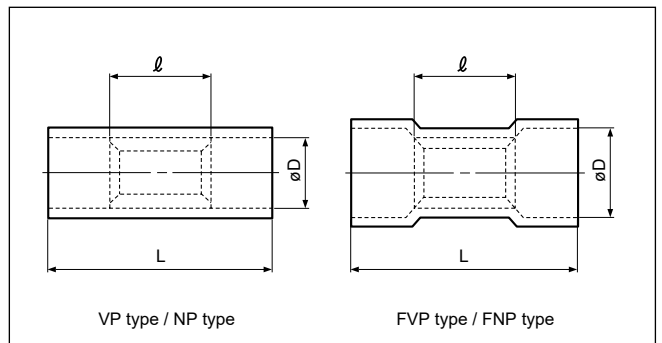
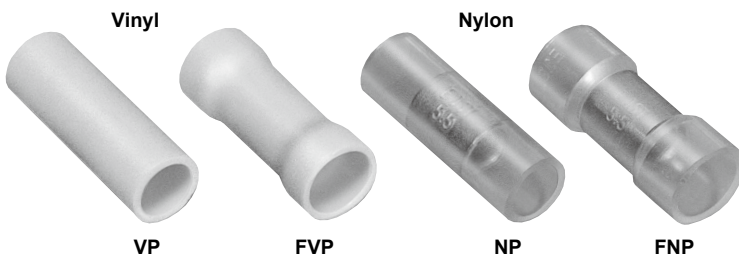


Non-insulated

Certificate No.: E42024 LR20812 JQ0607002

Applicable Wire AWG#(mm ²)	Part No.	Standard	Dimensions mm (in.)			Tool No.										Qty/box								
			L	ø D	ø d ₁	YHT-2214M	YHT-2210	YHT-8S	YA-1	YA-2	YA-4	YA-5	YPT-60N	YPT-150-1	E-4,YF-1		E-4,YF-1							
22 to 16 (0.25 to 1.65)	P-1.25		8.0 (.315)	3.3 (.130)	1.7 (.067)	o	o		o	o	o												1,000	
16 to 14 (1.04 to 2.63)	P-2		8.0 (.315)	4.1 (.161)	2.3 (.091)	o	o		o	o	o													
12 to 10 (2.63 to 6.64)	P-5.5		8.5 (.335)	5.4 (.213)	3.4 (.134)		o		o	o	o													
8 (6.64 to 10.52)	P-8			9.5 (.374)	7.0 (.276)	4.5 (.177)			o			o	o	o	o	o	o	o	o	o	o	o	o	500
6 (10.52 to 16.78)	P-14			11.0 (.433)	8.9 (.350)	5.8 (.228)						o	o	o	o	o	o	o	o	o	o	o	o	200
4 (16.78 to 26.66)	P-22			13.5 (.531)	11.3 (.445)	7.7 (.303)							o	o	o	o	o	o	o	o	o	o	o	100
2 (26.66 to 42.42)	P-38			16.5 (.650)	13.2 (.520)	9.4 (.370)							o	o	o	o	o	o	o	o	o	o	o	
1/0 (42.42 to 60.57)	P-60			19.0 (.748)	15.3 (.602)	11.4 (.449)							o	o	o	o	o	o	o	o	o	o	o	
2/0 (60.57 to 76.28)	P-70			19.0 (.748)	17.5 (.689)	13.3 (.524)								o		o	o	o	o	o	o	o	o	50
3/0 (76.28 to 96.3)	P-80			19.5 (.768)	19.5 (.768)	14.5 (.571)								o		o	o	o	o	o	o	o	o	25
4/0 (96.3 to 117.2)	P-100			20.0 (.787)	22.1 (.870)	16.4 (.646)								o		o	o	o	o	o	o	o	o	
350MCM (152.05 to 192.6)	P-180			28.5(1.122)	28.5(1.122)	21.0 (.827)														o	o	o	o	20
400MCM (192.6 to 242.27)	P-200			32.0(1.260)	32.4(1.276)	24.0 (.945)															o	o	o	10
N.A. (250)	P-250		32.0(1.260)	35.0(1.378)	26.0(1.024)															o	o	o		
600 to 650MCM (242.27 to 325)	P-325		37.0(1.457)	37.0(1.457)	28.0(1.102)															o	o	o		

Note: 1) Products with the JIS mark conform to JIS C2806.
 2) "Applicable Wires" indicates the total cross-sectional area.
 3) Delivery lead times may vary depending on the product. Contact JST for details.



Vinyl or Nylon insulated

Certificate No.: E42024 LR20812

Applicable Wire AWG#(mm ²)	Part No.		Standard	Dimensions mm (in.)			Color	Tool No.						Qty/box										
	Vinyl	Nylon		L	ℓ	øD		YNT-2216	YNT-1614	YNT-1210S	YA-1	YA-2	YA-4	Vinyl	Nylon									
22 to 16 *(0.25 to 1.65)	VP-1.25	NP-1.25		16.0 (.630)	8.0 (.315)	3.2 (.126)	o			o	o	o	o	o	o	o	o	o	o	o	o	o	o	
	FVP-1.25	FNP-1.25				4.0 (.157)																		1,000
16 to 14 (1.04 to 2.63)	VP-2	NP-2		16.0 (.630)	8.0 (.315)	3.9 (.154)	o			o	o	o	o	o	o	o	o	o	o	o	o	o	o	o
	FVP-2	FNP-2				4.5 (.177)																		
12 to 10 (2.63 to 6.64)	VP-5.5	-		20.5 (.807)	8.5 (.335)	5.4 (.213)				o			o	o	o	o	o	o	o	o	o	o	o	o
	FVP-5.5	FNP-5.5				6.8 (.268)																		

Note: 1) *The crimping will be more secure if the total cross-sectional area of the wire is at least 0.5 mm².
 Examples: If the cross-sectional area of the wire is 0.3 mm², fold the wire in two when crimping the terminal.
 If the cross-sectional area of the wire is 0.5 mm², crimp the terminal onto the wire as it is.
 2) "Applicable Wires" indicates the total cross-sectional area.
 3) Delivery lead times may vary depending on the product. Contact JST for details.

PARALLEL

Wire combination table for parallel splices specified by UL

AWG#	↓ Number of wires																P-1.25															
22	2	2	2	1	1	1	1	1																								
20	1			2	1	1						3	2	2	1	1																
18		1			1			1					1						2													
16									1							1																
AWG#	↓ Number of wires																P-2															
22	2	2	2	2	1	1	1	1	1	1	1	1	1	1	1	1	1	1	1	1	1	1	1	1	1	1	1	1				
20	1				2	1	1	1	1					3	2	2	2	2	1	1	1	1	1	1	1	1	1	1				
18		1				1					2	1	1			1			2	1	1					3	2	2	1			
16			1					1			1	1	1			1						1		2	1		1	1				
AWG#	↓ Number of wires																P-5.5															
18	3	2	2	1	1	1	1																									
16	1	1		1						2	1	1	1																			
14					1						1									2												
12							1					1																				
10								1					1																			
AWG#	↓ Number of wires																P-8															
16		1																														
14			1																													
12	2				1																											
10		1	1	1																												
AWG#	↓ Number of wires																P-14															
14		1																														
12					1																											
10	2																															
8		1	1																													
AWG#	↓ Number of wires																P-22															
10		1																														
8	2			1																												
6		1	1																													
AWG#	↓ Number of wires																P-38															
8		1																														
6	2																															
4		1																														
AWG#	↓ Number of wires																P-60															
6		1																														
4	2																															
2		1																														
AWG#	↓ Number of wires																P-70															
6		1																														
2	2																															
1/0		1																														
AWG#	↓ Number of wires																P-80															
4	1																															
2/0	1																															
AWG#	↓ Number of wires																P-100															
2	1																															
2/0	1																															
AWG#	↓ Number of wires																P-150															
2		1																														
1/0				1	1																											
2/0	2			1																												
3/0		1			1																											
AWG#	↓ Number of wires																P-180															
1/0		1																														
2/0					1	1																										
3/0	2					1																										
4/0		1		1																												
AWG#	↓ Number of wires																P-200															
2/0				1																												
3/0				1																												
4/0	2		1																													
250/MCM				1																												
AWG#	↓ Number of wires																P-325															
4/0	1																															
250/MCM				2																												
300/MCM	1																															

Note: 1) The combinations indicated in the table conform to UL standards only.