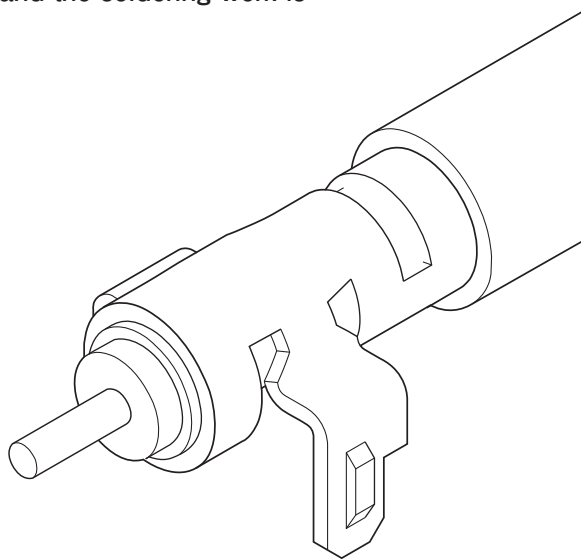


### ■ Features

- Robustness
- Improvement of soldering work
- Maintenance of the coaxial structure
- Two kinds of mounting specification  
(On-board specification, Off set specification)

This is a terminal to fix a coaxial cable to the PC board.

By press-fitting the dimple on the terminal foot portion into the PC board, the terminal is fixed when installing it onto the PC board and the soldering work is improved.

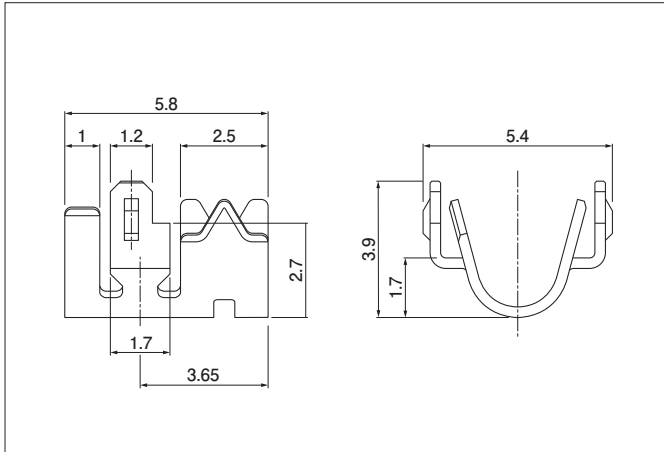


### ■ Specifications

- Temperature range:  $-25^{\circ}\text{C}$  to  $+85^{\circ}\text{C}$   
(including temperature rise in applying electrical current)
- Applicable wire: 1.5D coaxial wire  
\*An applicable wire requires evaluation separately.
- Applicable PC board thickness: t0.8 to 1.6 mm

\* Compliant with ELV/RoHS2.  
\* Contact JST for details.

## Contact



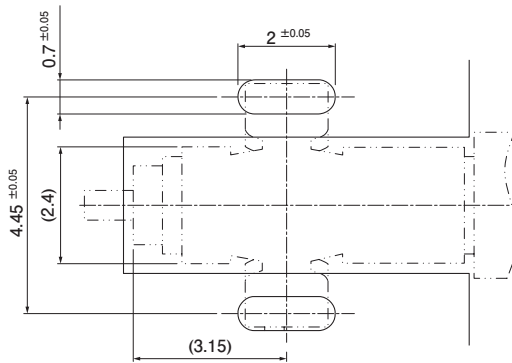
Model No.	Applicable wire	Q'ty /reel
	Braided O.D.(mm)	
SJG-90T-P2.0-A	2.1	3,000

### Material and Finish

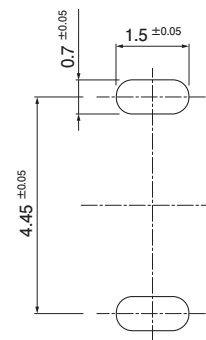
Copper alloy, tin-plated (reflow treatment)

## PC board layout

### Off set specification



### On-board specification



- Note: 1. The above figure is the figure viewed from the terminal mounting side.  
2. The dimensions shown above are our recommended values. Contact JST for details.

## Crimping machine, Splicator

Contact	Crimping machine	Crimp application MKS-L-10-SJG	
		Dies	Crimp application with dies
SJG-90T-P2.0-A	AP-K2N	MKS-L-10-SJG	APLMK SJG90-20-A

Note: When crimping operation is conducted using an applicator and die set other than the above, JST cannot guarantee the performance of the terminal.