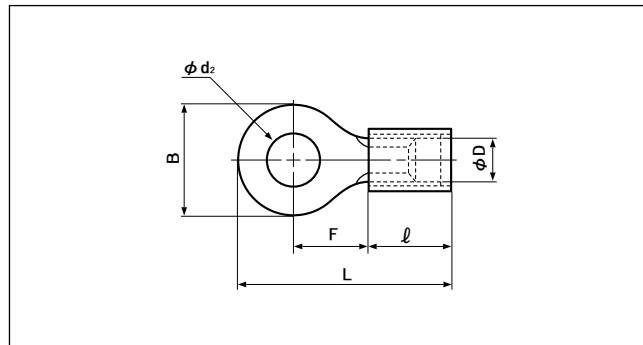


■銅スリーブ入絶縁付丸形端子(ストレート形)



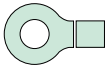
UL LISTED E42024

SP LR20812

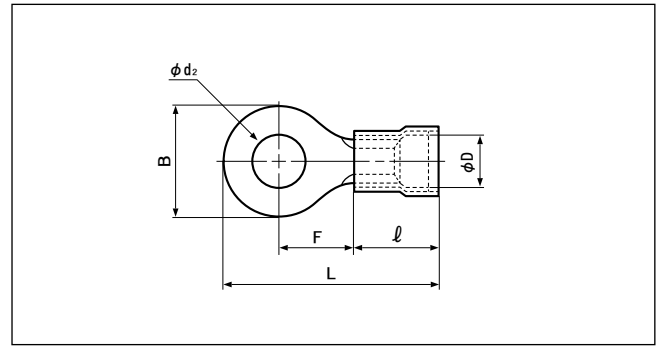
形番	規格	寸法(mm)							色	適用電線範囲 撚線(mm ²)	適用圧着工具			1箱 入数 (個)	
		φd2	B	L	F	ℓ	φD	板厚			手動	空気圧式	油圧式		
VD0.5-2	UL SP	2.2	5.2	16.4	5.8	8.0	2.2	0.5	黄	0.2~0.5 0.2 (AWG#24) 0.3 (AWG#22) 0.5	YNT-2622	YA-1, YAT-1A YA-2, YAT-2A YAD-1A YAD-2A	BCT-0514L	1,000	
VD0.5-3	UL SP	3.2			7.7										
VD0.5-4	UL SP	4.3			6.6										7.0
VD0.5-5	UL SP	5.3			8.0										7.0
VD1.25-3	UL SP	3.2	5.5	16.3	4.0	9.6	3.5	0.8	赤	0.25~1.65 0.3 (AWG#22) 0.5 (AWG#20) 0.75 (AWG#18) 0.9 1.25 (AWG#16)	YNT-2216	YA-1 YA-2 YAT-1A YAT-2A YAD-1A YAD-2A YA-4 YAT-4A YAD-4A	BCT-0514L	1,000	
VD1.25-MS3	UL SP			18.0	5.6										
VD1.25-L3	UL SP			8.0	20.6										7.0
VD1.25-3.7	UL SP			3.7	5.5										16.3
VD1.25-M3	UL SP	4.3	6.6	19.2	6.3	9.6	4.1	0.8	青	1.04~2.63 1.25 (AWG#16) 2.0 (AWG#14)	YNT-1614	YA-1 YA-2 YAT-1A YAT-2A YAD-1A YAD-2A YA-4 YAT-4A YAD-4A	BCT-0514L	1,000	
VD1.25-M4	UL SP														4.3
VD1.25-4	UL SP	5.3	8.0	20.6	7.0	9.6	4.1	0.8	青	1.04~2.63 1.25 (AWG#16) 2.0 (AWG#14)	YNT-1614	YA-1 YA-2 YAT-1A YAT-2A YAD-1A YAD-2A YA-4 YAT-4A YAD-4A	BCT-0514L	1,000	
VD1.25-5	UL SP														5.3
VD1.25-8	UL SP	8.4	11.6	26.5	11.1	9.6	4.1	0.8	青	1.04~2.63 1.25 (AWG#16) 2.0 (AWG#14)	YNT-1614	YA-1 YA-2 YAT-1A YAT-2A YAD-1A YAD-2A YA-4 YAT-4A YAD-4A	BCT-0514L	1,000	
VD1.25-10	UL SP	10.5	13.6	30.3	13.9										
VD2-MS3	UL SP	3.2	5.5	18.0	5.6	9.6	4.1	0.8	青	1.04~2.63 1.25 (AWG#16) 2.0 (AWG#14)	YNT-1614	YA-1 YA-2 YAT-1A YAT-2A YAD-1A YAD-2A YA-4 YAT-4A YAD-4A	BCT-0514L	1,000	
VD2-S3.3	UL SP			6.4	17.1										4.3
VD2-S3	UL SP	3.7	6.4	17.1	4.3	9.6	4.1	0.8	青	1.04~2.63 1.25 (AWG#16) 2.0 (AWG#14)	YNT-1614	YA-1 YA-2 YAT-1A YAT-2A YAD-1A YAD-2A YA-4 YAT-4A YAD-4A	BCT-0514L	1,000	
VD2-S3	UL SP														3.7
VD2-P3.5	UL SP	5.3	7.0	20.8	7.7	9.6	4.1	0.8	青	1.04~2.63 1.25 (AWG#16) 2.0 (AWG#14)	YNT-1614	YA-1 YA-2 YAT-1A YAT-2A YAD-1A YAD-2A YA-4 YAT-4A YAD-4A	BCT-0514L	1,000	
VD2-M3	UL SP														5.3
VD2-M4	UL SP	4.3	6.6	19.2	6.3	9.6	4.1	0.8	青	1.04~2.63 1.25 (AWG#16) 2.0 (AWG#14)	YNT-1614	YA-1 YA-2 YAT-1A YAT-2A YAD-1A YAD-2A YA-4 YAT-4A YAD-4A	BCT-0514L	1,000	
VD2-4	UL SP														4.3
VD2-4	UL SP	5.3	8.5	21.6	7.8	9.6	4.1	0.8	青	1.04~2.63 1.25 (AWG#16) 2.0 (AWG#14)	YNT-1614	YA-1 YA-2 YAT-1A YAT-2A YAD-1A YAD-2A YA-4 YAT-4A YAD-4A	BCT-0514L	1,000	
VD2-M5	UL SP														5.3
VD2-5	UL SP	6.4	9.5		7.3	9.6	4.1	0.8	青	1.04~2.63 1.25 (AWG#16) 2.0 (AWG#14)	YNT-1614	YA-1 YA-2 YAT-1A YAT-2A YAD-1A YAD-2A YA-4 YAT-4A YAD-4A	BCT-0514L	1,000	
VD2-6	UL SP														6.4
VD2-6	UL SP	8.4	12.0	26.6	11.0	9.6	4.1	0.8	青	1.04~2.63 1.25 (AWG#16) 2.0 (AWG#14)	YNT-1614	YA-1 YA-2 YAT-1A YAT-2A YAD-1A YAD-2A YA-4 YAT-4A YAD-4A	BCT-0514L	1,000	
VD2-8	UL SP														8.4
VD2-14	UL SP	15.0	27.0	44.3	21.2	14.0	5.7	1.0	黄	2.63~6.64 3.5 (AWG#12) 5.5 (AWG#10)	YNT-1210S	YA-4 YAT-4A YAD-4A	BCT-0514L	500	
VD5.5-3	UL SP	3.2	9.5	27.0	8.3										
VD5.5-S4	UL SP	4.3	7.2	23.5	5.9	14.0	5.7	1.0	黄	2.63~6.64 3.5 (AWG#12) 5.5 (AWG#10)	YNT-1210S	YA-4 YAT-4A YAD-4A	BCT-0514L	500	
VD5.5-4	UL SP														4.3
VD5.5-5	UL SP	5.3	9.5	27.0	8.3	14.0	5.7	1.0	黄	2.63~6.64 3.5 (AWG#12) 5.5 (AWG#10)	YNT-1210S	YA-4 YAT-4A YAD-4A	BCT-0514L	500	
VD5.5-5	UL SP	5.3	9.5	27.0	8.3										
VD5.5-8	UL SP	8.4	15.0	35.2	13.7	14.0	5.7	1.0	黄	2.63~6.64 3.5 (AWG#12) 5.5 (AWG#10)	YNT-1210S	YA-4 YAT-4A YAD-4A	BCT-0514L	500	
VD5.5-8	UL SP	8.4	15.0	35.2	13.7										

注1) 本製品の中には多少納期を要するものもあります。

注2) VD0.5-()におけるUL登録の適用電線はAWG#26~AWG#22です。



■銅スリーブ入絶縁付丸形端子(F形)



UL LISTED E42024

LR20812

形番	規格	寸法(mm)							色	適用電線範囲 撚線(mm ²)	適用圧着工具			1箱 入数 (個)		
		φd2	B	L	F	ℓ	φD	板厚			手動	空気圧式	油圧式			
FVD0.5-2		2.2	5.2	16.7	5.8	8.3	2.5	0.5	黄	0.2~0.5 (0.2 (AWG#24) 0.3 (AWG#22) 0.5)	YNT-2622	YA-1,YAT-1A YA-2,YAT-2A YAD-1A YAD-2A	BCT-0514L	1,000		
FVD0.5-3		3.2			7.7											
FVD0.5-4		4.3			6.6										19.3	7.0
FVD0.5-5		5.3			8.0											
FVD1.25-3		3.2	5.5	16.3	4.0	9.6	4.0	0.8	赤	0.25~1.65 (0.3 (AWG#22) 0.5 (AWG#20) 0.75(AWG#18) 0.9 1.25(AWG#16))	YNT-2216	YA-1 YA-2 YAT-1A YAT-2A YAD-1A YAD-2A YA-4 YAT-4A YAD-4A	BCT-0514L	1,000		
FVD1.25-MS3				18.0	5.6											
FVD1.25-M3		3.7	6.6	19.2	6.3	9.6	4.0	0.8	赤	0.25~1.65 (0.3 (AWG#22) 0.5 (AWG#20) 0.75(AWG#18) 0.9 1.25(AWG#16))	YNT-2216	YA-1 YA-2 YAT-1A YAT-2A YAD-1A YAD-2A YA-4 YAT-4A YAD-4A	BCT-0514L	1,000		
FVD1.25-M4		4.3														
FVD1.25-4		5.3	8.0	20.6	7.0	9.6	4.0	0.8	赤	0.25~1.65 (0.3 (AWG#22) 0.5 (AWG#20) 0.75(AWG#18) 0.9 1.25(AWG#16))	YNT-2216	YA-1 YA-2 YAT-1A YAT-2A YAD-1A YAD-2A YA-4 YAT-4A YAD-4A	BCT-0514L	1,000		
FVD1.25-5		6.4														
FVD1.25-6		8.4	11.6	26.5	11.1	9.6	4.7	0.8	青	1.04~2.63 (1.25 (AWG#16) 2.0 (AWG#14))	YNT-1614	YA-1 YA-2 YAT-1A YAT-2A YAD-1A YAD-2A YA-4 YAT-4A YAD-4A	BCT-0514L	1,000		
FVD2-MS3		3.2	5.5	18.0	5.6											
FVD2-S3.3			6.4	17.1	4.3	9.6	4.7	0.8	青	1.04~2.63 (1.25 (AWG#16) 2.0 (AWG#14))	YNT-1614	YA-1 YA-2 YAT-1A YAT-2A YAD-1A YAD-2A YA-4 YAT-4A YAD-4A	BCT-0514L	1,000		
FVD2-3		8.5	21.6	7.8												
FVD2-S3		3.7	6.4	17.1	4.3	9.6	4.7	0.8	青	1.04~2.63 (1.25 (AWG#16) 2.0 (AWG#14))	YNT-1614	YA-1 YA-2 YAT-1A YAT-2A YAD-1A YAD-2A YA-4 YAT-4A YAD-4A	BCT-0514L	1,000		
FVD2-M3			6.6	19.2	6.3											
FVD2-M4		4.3	7.0	20.8	7.7	9.6	4.7	0.8	青	1.04~2.63 (1.25 (AWG#16) 2.0 (AWG#14))	YNT-1614	YA-1 YA-2 YAT-1A YAT-2A YAD-1A YAD-2A YA-4 YAT-4A YAD-4A	BCT-0514L	1,000		
FVD2-P4			8.5	21.6	7.8											
FVD2-4		5.3	9.5		7.3	9.6	4.7	0.8	青	1.04~2.63 (1.25 (AWG#16) 2.0 (AWG#14))	YNT-1614	YA-1 YA-2 YAT-1A YAT-2A YAD-1A YAD-2A YA-4 YAT-4A YAD-4A	BCT-0514L	1,000		
FVD2-M5			12.0	26.6	11.0											
FVD2-5		6.4	12.0	26.6	11.0	9.6	4.7	0.8	青	1.04~2.63 (1.25 (AWG#16) 2.0 (AWG#14))	YNT-1614	YA-1 YA-2 YAT-1A YAT-2A YAD-1A YAD-2A YA-4 YAT-4A YAD-4A	BCT-0514L	1,000		
FVD2-6		8.4	12.0	26.6	11.0											
FVD2-8		10.5	13.6	30.3	13.9	9.6	4.7	0.8	青	1.04~2.63 (1.25 (AWG#16) 2.0 (AWG#14))	YNT-1614	YA-1 YA-2 YAT-1A YAT-2A YAD-1A YAD-2A YA-4 YAT-4A YAD-4A	BCT-0514L	1,000		
FVD2-10		15.0	27.0	44.3	21.2											
FVD2-14		21.0	27.0	44.3	21.2	9.6	4.7	0.8	青	1.04~2.63 (1.25 (AWG#16) 2.0 (AWG#14))	YNT-1614	YA-1 YA-2 YAT-1A YAT-2A YAD-1A YAD-2A YA-4 YAT-4A YAD-4A	BCT-0514L	1,000		
FVD2-20		21.0	27.0	44.3	21.2											
FVD5.5-S3		3.7	7.2	23.5	5.9	14.0	6.5	1.0	黄	2.63~6.64 (3.5 (AWG#12) 5.5 (AWG#10))	YNT-1210S	YA-4 YAT-4A YAD-4A	BCT-0514L	500		
FVD5.5-S4															9.5	27.0
FVD5.5-4		4.3	9.5	27.0	8.3	14.0	6.5	1.0	黄	2.63~6.64 (3.5 (AWG#12) 5.5 (AWG#10))	YNT-1210S	YA-4 YAT-4A YAD-4A	BCT-0514L	500		
FVD5.5-5															12.0	33.0
FVD5.5-6		6.4	12.0	33.0	13.0	14.0	6.5	1.0	黄	2.63~6.64 (3.5 (AWG#12) 5.5 (AWG#10))	YNT-1210S	YA-4 YAT-4A YAD-4A	BCT-0514L	500		
FVD5.5-S6															13.2	29.6
FVD5.5-S8		8.4	15.0	35.2	13.7	14.0	6.5	1.0	黄	2.63~6.64 (3.5 (AWG#12) 5.5 (AWG#10))	YNT-1210S	YA-4 YAT-4A YAD-4A	BCT-0514L	500		
FVD5.5-8															15.0	35.2
FVD5.5-10		10.5	15.0	35.2	13.7	14.0	6.5	1.0	黄	2.63~6.64 (3.5 (AWG#12) 5.5 (AWG#10))	YNT-1210S	YA-4 YAT-4A YAD-4A	BCT-0514L	500		
FVD5.5-S8		15.0	35.2	13.7												

注1) 本製品の中には多少納期を要するものもあります。

注2) FVD0.5-()におけるUL登録の適用電線はAWG#26~AWG#22です。