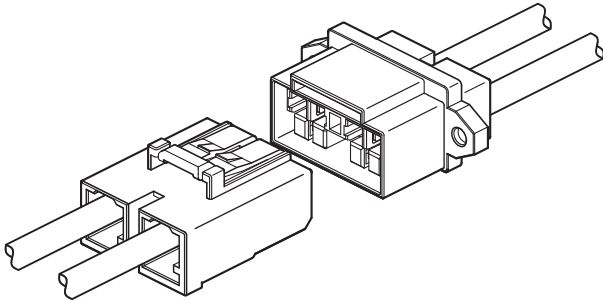


FAH CONNECTOR

16 mm pitch/Wire-to-Wire connectors/Crimp style and Mating style



This is a wire-to-wire connector with a 50 A maximum current rating. It is a robust, one-touch, disconnectable connector for high current applications. In addition, both male and female contacts feature the same structure and design. Both tab and receptacle housings are finger-protected to prevent electrical shock.

- Finger protection safety feature
- Housings are designed to prevent incorrect mating
- High reliability

■ Specifications

• Current rating:

* The following table shows the rated current by number of circuits and wire size.

Unit: A (AC/DC)

No. of circuits	Wire size	
	AWG #8	AWG #10
1	50	35
2	50	35

• Voltage rating: 600 V AC/DC

• Temperature range: -25°C to +85°C

(including temperature rise in applying electrical current)

• Contact resistance:

Initial value/ 2 mΩ max.

After environmental tests/ 5 mΩ max.

• Insulation resistance: 100 MΩ min.

• Withstanding voltage:

There shall be no breakdown or flashover while applying 3,000 VAC for one minute.

• Applicable wire range:

Conductor size/ AWG #10 to AWG #8

Insulation O.D./ ϕ 4.6 mm to ϕ 7.8 mm

* Please refer to the "Handling Precautions for Terminals and Connectors" on our website (listed in the "Technical Documents" column on the Product Information page) before use.

* RoHS2 compliance

* Dimensional unit: mm

* Contact JST for details.

■ Standards

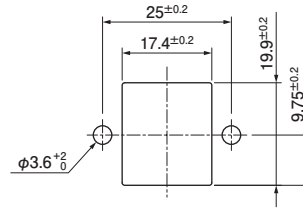
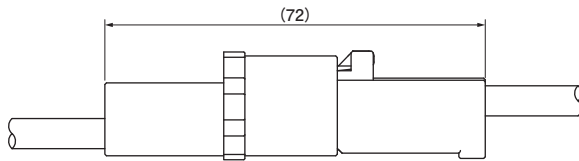
For information on overseas standard registrations, please refer to the "List of Registered Overseas Standards" on our website (listed in the "Technical Documents" column on the Product Information page).

* Specifications registered to overseas standards may differ from the general specifications listed above.

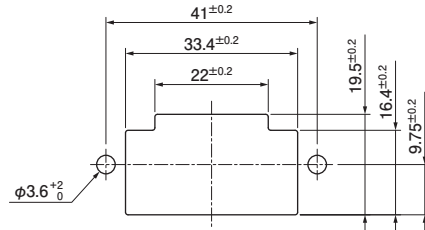
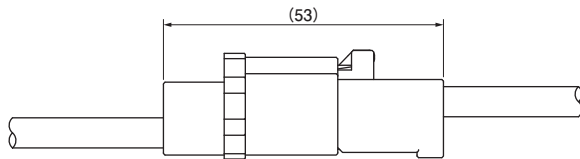
FAH CONNECTOR

Assembly layout and Panel layout

<Single circuit>

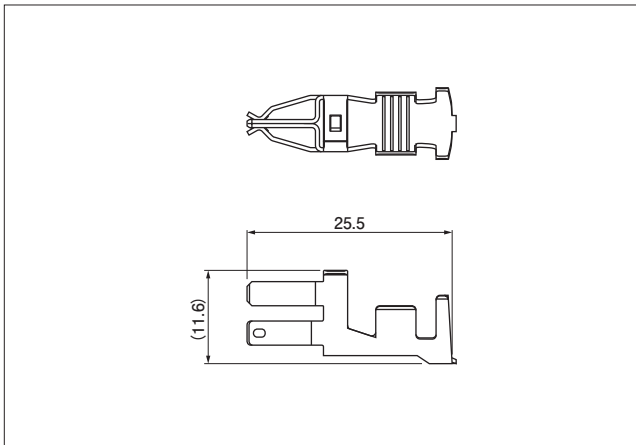


<2 circuits>



- Note: 1. Drill holes in the panel according to the sketch and table shown above. Burrs must be removed.
 2. The strength of the panel must be considered when punching two or more holes.
 3. The drilled hole must be at the same angle as the direction in which the connector is inserted.

Contact (In common with tab housing and receptacle housing)



Model No.	Applicable wire range		Q'ty/ reel
	Conductor size AWG (mm ²)	Insulation O.D. (mm)	
SFAH-91GC(Z)-M3	#10 (5.3)	4.6 to 5.3	500
SFAH-A1GC(Z)-M3	#8 (8.4)	5.5 to 7.8	500

Material and Surface finish, etc.

Copper alloy, selective gold-plated

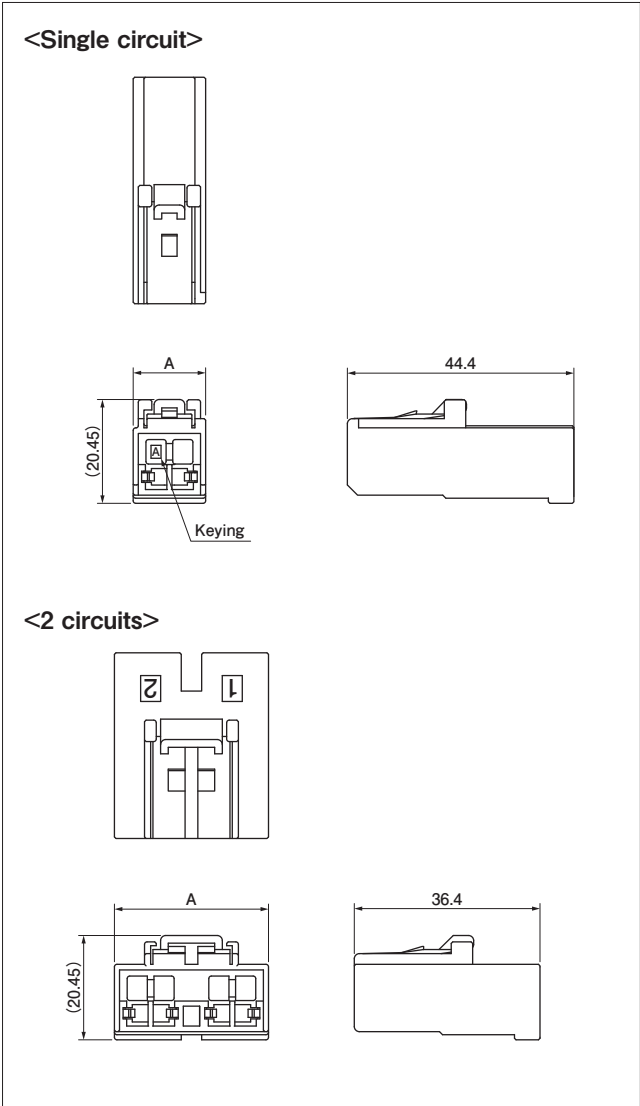
Crimping machine

Contact	Crimping machine	Applicator	Crimp applicator with dies
SFAH-91GC(Z)-M3	AP-K2N	MKS-L-FAH-K2	APLMK SFAH-91-M3-K2
	AP-K6A	MKS-L-FAH	APLMK SFAH-91-M3
SFAH-A1GC(Z)-M3			APLMK SFAH-A1-M3

Note: Contact JST for hand tooling and battery tooling.

FAH CONNECTOR

Tab housing



No. of circuits	Keying	Model No.	Color	Dimensions (mm)	Q'ty/bag
				A	
1	A	FAH-M01V-KL1-A	Black	14.2	100
	B	FAH-M01V-RL1-B	Red	14.2	100
2	—	FAH-M02V-K	Black	30.2	100

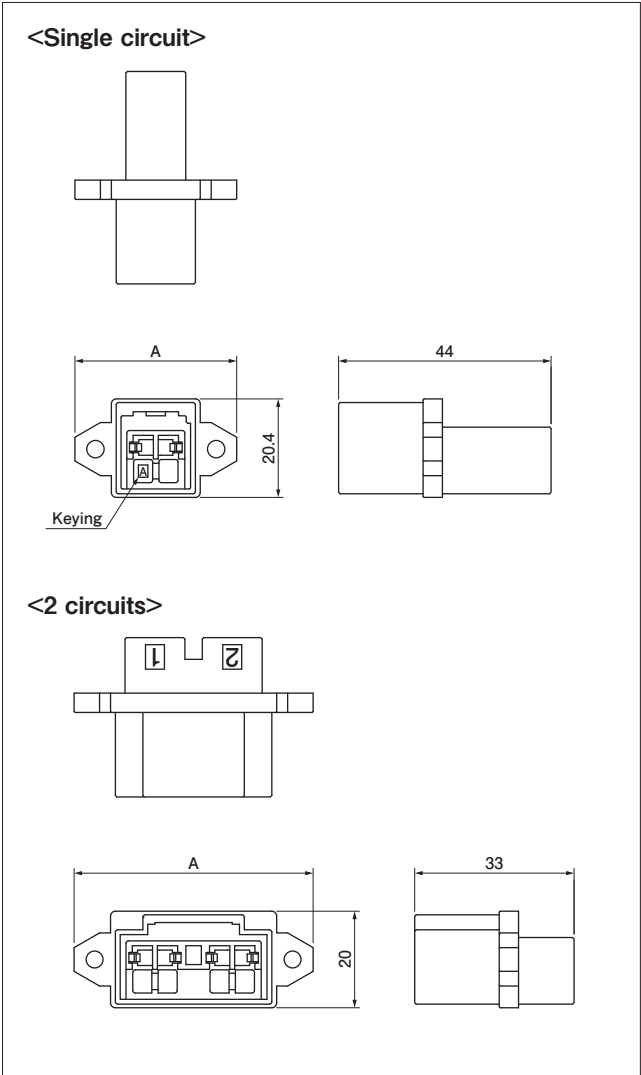
Material and Surface finish, etc.

PBT (GF)

Note: For flame retardant grade of resin material used, please refer to the "List of Registered Overseas Standards" on our website (listed in the "Technical Documents" column on the Product Information page).

FAH CONNECTOR

Receptacle housing



No. of circuits	Keying	Model No.	Color	Dimensions (mm)	Q'ty/bag
				A	
1	A	FAH-F01V-KL1-A	Black	33.5	80
	B	FAH-F01V-RL1-B	Red	33.5	80
2	—	FAH-F02V-K	Black	49.5	80

Material and Surface finish, etc.

PBT (GF)

Note: For flame retardant grade of resin material used, please refer to the "List of Registered Overseas Standards" on our website (listed in the "Technical Documents" column on the Product Information page).