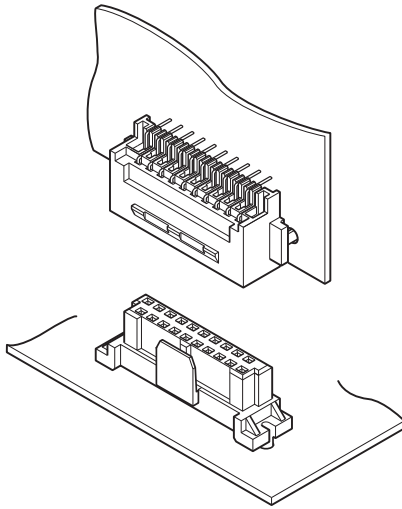


JDV CONNECTOR

3.0 mm pitch/Board-to-Board connectors/Mating style



The JDV connector is designed for board-to-board connections with a secure locking device that provides stability and excellent performance against shock and vibration.

- Two types of locking devices
- Two types of hook pins to assure temporary board connection
- Solder tails and contacts are staggered for increased soldering strength and mating stability

Standards

UL: Recognized E 60389

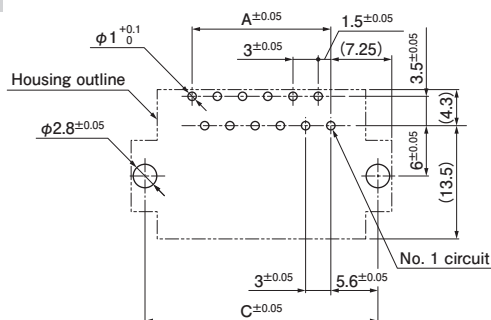
CSA: Certified LR 20812

Specifications

- Current rating: 1.0 A AC/DC
 - Voltage rating: 50 V AC/DC
 - Temperature range: -25°C to +85°C
(including temperature rise in applying electrical current)
 - Contact resistance:
 - Initial value/ 30 mΩ max.
 - After environmental tests/ 50 mΩ max.
 - Insulation resistance: 800 MΩ min.
 - Withstanding voltage:
 - There shall be no breakdown or flashover while applying 300 VAC for one minute.
 - Applicable PC board thickness: 1.6 mm
- * In using the products, refer to "Handling Precautions for Terminals and Connectors" described on our website (Technical documents of Product information page).
- * RoHS2 compliance
- * Dimensional unit: mm
- * Contact JST for details.

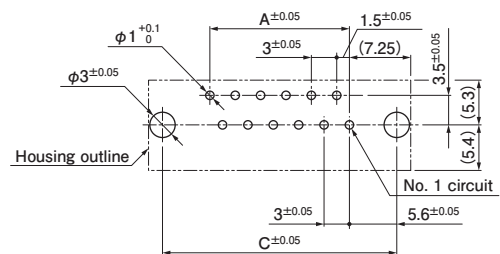
PC board layout

Plug

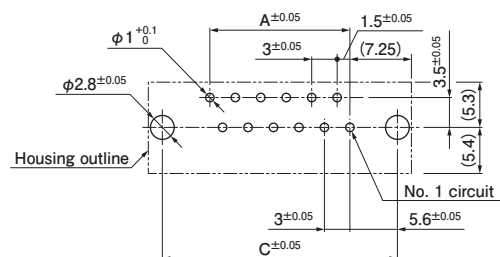


Receptacle

- Resin hook type



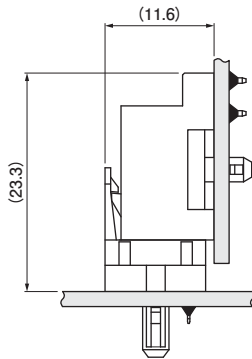
- Metal hook type



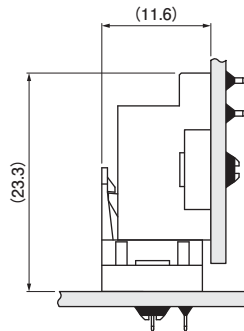
- Note: 1. The figure of PC board layout is the figure viewed from the connector mounting side.
2. Dimensions A and C: See "Plug" section on page 2 and "Receptacle" section on page 3.
3. Tolerance for the PCB hole pitch shall be ± 0.05 , and shall not accumulate more than ± 0.05 .
4. Hole dimensions differ according to the type of PC board and piercing method.
The above dimensions are reference values.
Please contact JST for details.

Assembly layout

Resin hook type



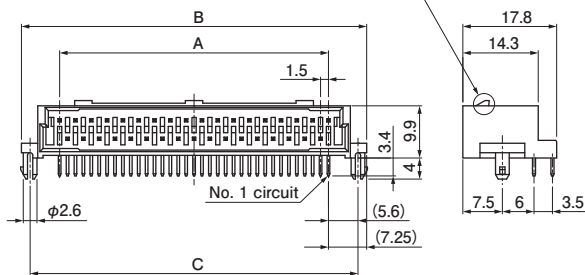
Metal hook type



Plug

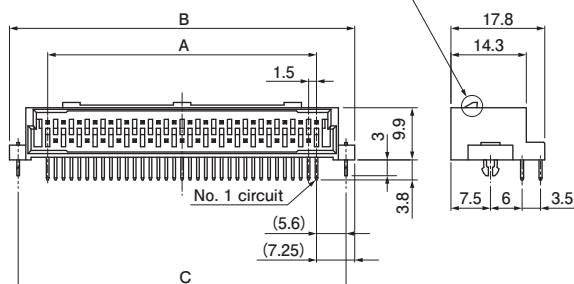
Resin hook type

There are two types of locks shown in the figure below.



Metal hook type

There are two types of locks shown in the figure below.



Lock type

Secure lock type	Friction lock type

Resin hook type

No. of circuits	Model No.		Dimensions (mm)			Q'ty/box
	Secure lock type	Friction lock type	A	B	C	
30	JDV-PS30LB-10-1	—	43.5	58.0	54.7	240
40	JDV-PS40LB-10-1	—	58.5	73.0	69.7	160

Material and Surface finish, etc.

Contact: Brass, nickel-undercoated, selective gold-plated
Housing: PBT, UL94V-0, natural (Secure lock type)

Note: This product displays (LF)(SN) on a label.

Metal hook type

No. of circuits	Model No.		Dimensions (mm)			Q'ty/box
	Secure lock type	Friction lock type	A	B	C	
20	JDV-PS20LB-10A	—	28.5	43.0	39.7	320
40	—	JDV-PS40FLB-10A	58.5	73.0	69.7	160

Material and Surface finish, etc.

Contact: Brass, nickel-undercoated, selective gold-plated
Housing: PBT, UL94V-0, natural (Secure lock type)
black (Friction lock type)

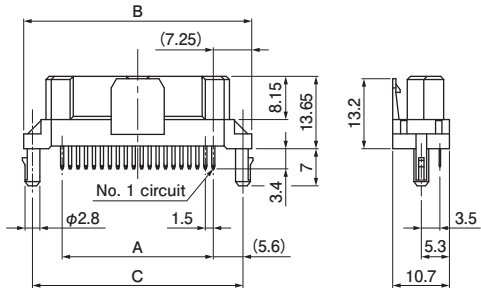
Metal hook: Brass, copper-undercoated, tin-plated

Note: This product displays (LF)(SN) on a label.

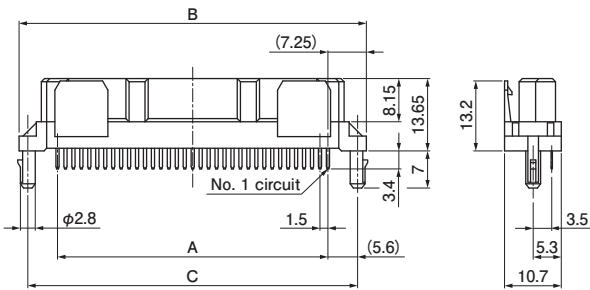
Receptacle

Resin hook type

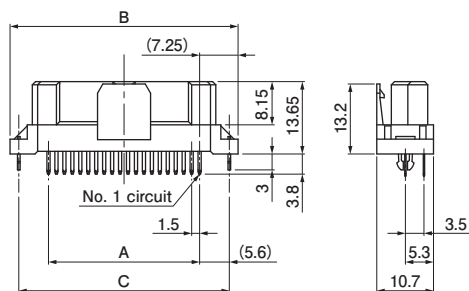
<30 circuits>



<40 circuits>



Metal hook type



Resin hook type

No. of circuits	Model No.	Dimensions (mm)			Q'ty/box
		A	B	C	
30	JDV-R30LB-10-1	43.5	58.0	54.7	300
40	JDV-R40LB-10-1	58.5	73.0	69.7	200

Material and Surface finish, etc.

Contact: Phosphor bronze, nickel-undercoated, selective gold-plated
Housing: PBT, UL94V-0, natural

Note: This product displays (LF)(SN) on a label.

Metal hook type

No. of circuits	Model No.	Dimensions (mm)			Q'ty/box
		A	B	C	
20	JDV-R20LB-10A	28.5	43.0	39.7	400

Material and Surface finish, etc.

Contact: Phosphor bronze, nickel-undercoated, selective gold-plated
Housing: PBT, UL94V-0, natural
Metal hook: Brass, copper-undercoated, tin-plated

Note: This product displays (LF)(SN) on a label.