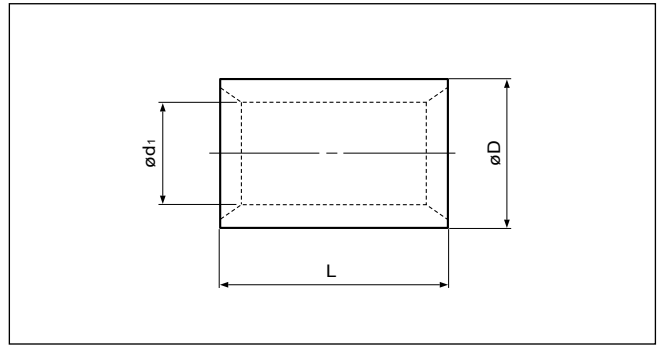


Solderless splices

PARALLEL

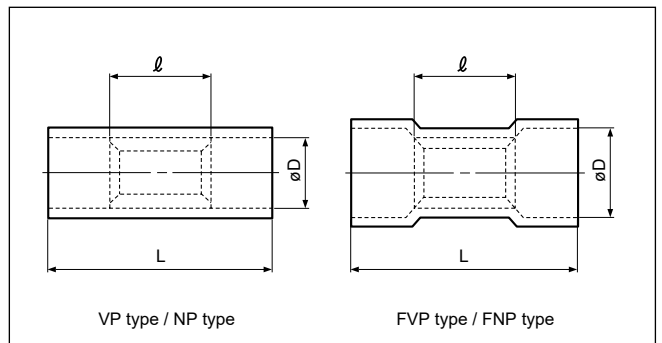
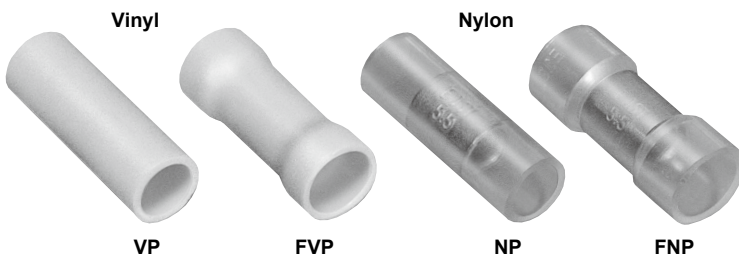


Non-insulated

Certificate No.: E42024 LR20812 JQ0607002

Applicable Wire AWG#(mm ²)	Part No.	Standard	Dimensions mm (in.)			Tool No.								Qty/box				
			L	ø D	ø d ₁	YHT-2210	YHT-6S	YA-1	YA-2	YA-4	YA-5	YPT-60N	YPT-150-1		E-4,YF-1	E-4,YF-1		
22 to 16 (0.25 to 1.65)	P-1.25		8.0 (.315)	3.3 (.130)	1.7 (.067)	o		o	o	o							1,000	
16 to 14 (1.04 to 2.63)	P-2		8.0 (.315)	4.1 (.161)	2.3 (.091)	o		o	o	o								
12 to 10 (2.63 to 6.64)	P-5.5		8.5 (.335)	5.4 (.213)	3.4 (.134)	o		o	o	o								
8 (6.64 to 10.52)	P-8			9.5 (.374)	7.0 (.276)	4.5 (.177)		o			o	o	o	o	o	o	o	500
6 (10.52 to 16.78)	P-14			11.0 (.433)	8.9 (.350)	5.8 (.228)					o	o	o	o	o	o	o	200
4 (16.78 to 26.66)	P-22			13.5 (.531)	11.3 (.445)	7.7 (.303)						o	o	o	o	o	o	100
2 (26.66 to 42.42)	P-38			16.5 (.650)	13.2 (.520)	9.4 (.370)						o	o	o	o	o	o	
1/0 (42.42 to 60.57)	P-60			19.0 (.748)	15.3 (.602)	11.4 (.449)						o	o	o	o	o	o	
2/0 (60.57 to 76.28)	P-70			19.0 (.748)	17.5 (.689)	13.3 (.524)							o	o	o	o	o	50
3/0 (76.28 to 96.3)	P-80			19.5 (.768)	19.5 (.768)	14.5 (.571)								o	o	o	o	25
4/0 (96.3 to 117.2)	P-100		20.0 (.787)	22.1 (.870)	16.4 (.646)							o	o	o	o	o		
350MCM (152.05 to 192.6)	P-180		28.5(1.122)	28.5(1.122)	21.0 (.827)											o	o	20
400MCM (192.6 to 242.27)	P-200		32.0(1.260)	32.4(1.276)	24.0 (.945)											o	o	10
N.A. (250)	P-250		32.0(1.260)	35.0(1.378)	26.0(1.024)											o	o	
600 to 650MCM (242.27 to 325)	P-325		37.0(1.457)	37.0(1.457)	28.0(1.102)											o	o	

Note: 1) Products with the JIS mark conform to JIS C2806.
 2) "Applicable Wires" indicates the total cross-sectional area.
 3) Delivery lead times may vary depending on the product. Contact JST for details.



Vinyl or Nylon insulated

Certificate No.: E42024 LR20812

Applicable Wire AWG#(mm ²)	Part No.		Standard	Dimensions mm (in.)			Color	Tool No.						Qty/box		
	Vinyl	Nylon		L	l	øD		YNT-2216	YNT-1614	YNT-1210S	YA-1	YA-2	YA-4	Vinyl	Nylon	
22 to 16 *(0.25 to 1.65)	VP-1.25	NP-1.25		16.0 (.630)	8.0 (.315)	3.2 (.126)	o		o	o	o	o	o	o	o	1,000
	FVP-1.25	FNP-1.25				4.0 (.157)										
16 to 14 (1.04 to 2.63)	VP-2	NP-2		16.0 (.630)	8.0 (.315)	3.9 (.154)	o		o	o	o	o	o	o	o	1,000
	FVP-2	FNP-2				4.5 (.177)										500
12 to 10 (2.63 to 6.64)	VP-5.5	-		20.5 (.807)	8.5 (.335)	5.4 (.213)		o		o	o	o	o	o	o	500
	FVP-5.5	FNP-5.5				6.8 (.268)										250

Note: 1) *The crimping will be more secure if the total cross-sectional area of the wire is at least 0.5 mm².
 Examples: If the cross-sectional area of the wire is 0.3 mm², fold the wire in two when crimping the terminal.
 If the cross-sectional area of the wire is 0.5 mm², crimp the terminal onto the wire as it is.
 2) "Applicable Wires" indicates the total cross-sectional area.
 3) Delivery lead times may vary depending on the product. Contact JST for details.

PARALLEL

Wire combination table for parallel splices specified by UL

AWG#	↓ Number of wires																			P-1.25				
22	2	2	2	1	1	1	1	1																
20	1			2	1	1			3	2	2	1	1											
18		1			1		1			1		1		2										
16								1					1											
AWG#	↓ Number of wires																			P-2				
22	2	2	2	2	1	1	1	1	1	1	1	1	1											
20	1				2	1	1	1					3	2	2	2	1	1	1	1				
18		1				1			2	1	1			1			2	1	1		3			
16			1				1			1		1		1			1		2	1	1			
AWG#	↓ Number of wires																			P-5.5				
18	3	2	2	1	1	1	1																	
16	1	1		1				2	1	1	1													
14					1				1				2											
12						1				1														
10							1				1													
AWG#	↓ Number of wires																			P-8				
16		1																						
14			1																					
12	2			1																				
10		1	1	1																				
AWG#	↓ Number of wires																			P-14				
14		1																						
12			1																					
10	2																							
8		1	1																					
AWG#	↓ Number of wires																			P-22				
10		1																						
8	2		1																					
6		1	1																					
AWG#	↓ Number of wires																			P-38				
8		1																						
6	2																							
4		1																						
AWG#	↓ Number of wires																			P-60				
6		1																						
4	2																							
2		1																						
AWG#	↓ Number of wires																			P-70				
6		1																						
2	2																							
1/0		1																						
AWG#	↓ Number of wires																			P-80				
4	1																							
2/0	1																							
AWG#	↓ Number of wires																			P-100				
2	1																							
2/0	1																							
AWG#	↓ Number of wires																			P-150				
2		1																						
1/0			1	1																				
2/0	2		1																					
3/0		1	1	1																				
AWG#	↓ Number of wires																			P-180				
1/0		1																						
2/0			1	1																				
3/0	2		1		1																			
4/0		1	1	1																				
AWG#	↓ Number of wires																			P-200				
2/0			1																					
3/0		1																						
4/0	2	1																						
250/MCM			1																					
AWG#	↓ Number of wires																			P-325				
4/0	1																							
250/MCM		2																						
300/MCM	1																							

Note: 1) The combinations indicated in the table conform to UL standards only.