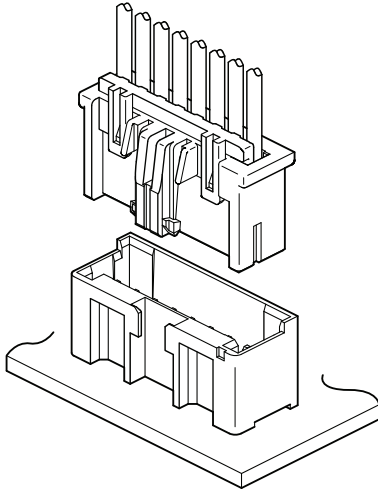


# PW CONNECTOR <Type A>

2.5 mm pitch/Wire-to-Board connectors/Crimp style and Mating style



This is a 2.5 mm pitch wire-to-board connector with a retainer-mountable housing made from Glow Wire test-compliant material.

- **Glow-wire compliant**

Meets the GWT 850°C standard, ensuring enhanced safety and reliability. Demonstrates improved protection and compliance in a wide range of household appliances.

- **Housing lance system**

Ensures smooth contact insertion to achieve a reliable connection.

- **Retainer**

Optional retainers enhance connection reliability by preventing incomplete insertion or accidental contact disengagement.

- **Secure lock mechanism**

Featuring a secure inner locking mechanism that minimizes disengagement caused by tension and torsion in wire routing.

- **Polarization boss**

Offered with polarization boss to prevent incorrect mounting on the board.

## ■ Specifications

- Current rating: 3 A AC/ DC (AWG #22)
- Voltage rating: 250 V AC/ DC
- Temperature range: -40°C to +105°C  
(including temperature rise in applying electrical current)
- Contact resistance: Initial value/ 20mΩ max.  
After test/ 10 mΩ max.  
(Variation from initial value)
- Insulation resistance: 1,000 MΩ min.
- Withstanding voltage:  
There shall be no breakdown or flashover while applying 1,000 VAC for one minute.
- Applicable wire range:  
Conductor size/ AWG #26 to AWG #22  
Insulation O.D./  $\phi$  1.3 mm to  $\phi$  1.7 mm
- Applicable PC board thickness: 1.6 mm
- \* Please refer to the "Handling Precautions for Terminals and Connectors" on our website (listed in the "Technical Documents" column on the Product Information page) before use.
- \* RoHS2 compliance
- \* Dimensional unit: mm
- \* Contact JST for details.

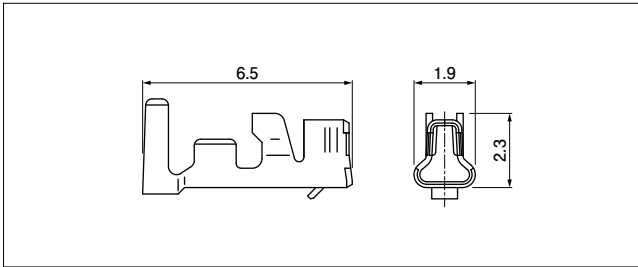
## ■ Standards

For information on overseas standard registrations, please refer to the "List of Registered Overseas Standards" on our website (listed in the "Technical Documents" column on the Product Information page).

- \* Specifications registered to overseas standards may differ from the general specifications listed above.

# PW CONNECTOR <Type A>

## Contact



Model No.	Applicable wire range		Q'ty/ reel
	Conductor size AWG (mm <sup>2</sup> )	Insulation O.D.(mm)	
SXA-001T-P0.6L	#26 to #22 (0.13 to 0.33)	1.3 to 1.7	8,000

Material and Surface finish, etc.

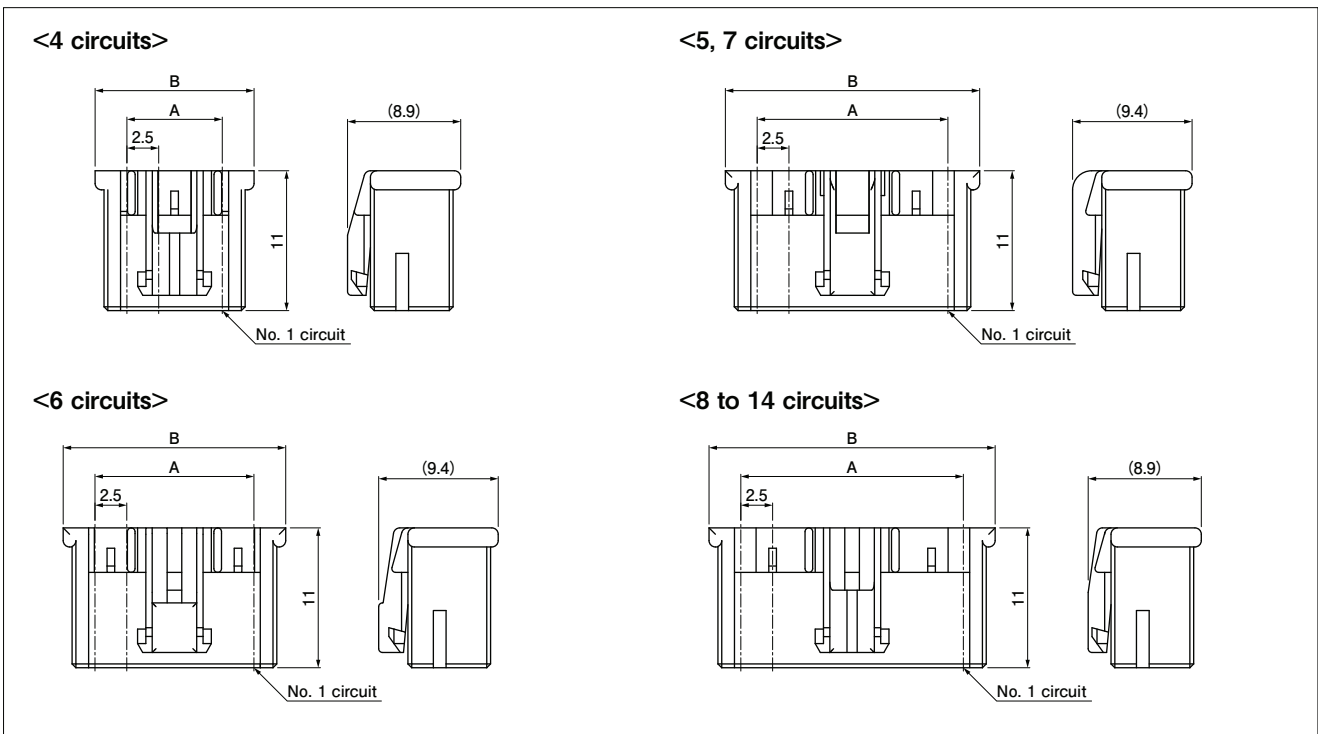
Copper alloy, tin-plated

## Crimping machine

Contact	Crimping machine	Applicator	Crimp applicator with dies
SXA-001T-P0.6L	AP-K2N	MKS-L	APLMK SXA001-06L

Note: Contact JST for fully automatic crimping applicator.

## Housing



No. of circuits	Model No.	Dimensions (mm)		Q'ty/bag
		A	B	
4	PWAP-04V-WGL1	7.5	12.5	500
5	PWAP-05V-WGL1	10.0	15.0	500
6	PWAP-06V-WGL1	12.5	17.5	500
7	PWAP-07V-WGL1	15.0	20.0	500
8	PWAP-08V-WGL1	17.5	22.5	500
9	PWAP-09V-WGL1	20.0	25.0	500
10	PWAP-10V-WGL1	22.5	27.5	500
11	PWAP-11V-WGL1	25.0	30.0	500
12	PWAP-12V-WGL1	27.5	32.5	500
13	PWAP-13V-WGL1	30.0	35.0	500
14	PWAP-14V-WGL1	32.5	37.5	500

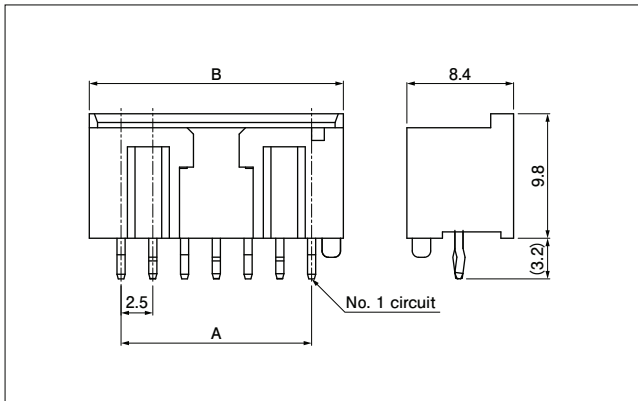
Material and Surface finish, etc.

Thermoplastic resin, natural

Note: For flame retardant grade of resin material used, please refer to the "List of Registered Overseas Standards" on our website (listed in the "Technical Documents" column on the Product Information page).

# PW CONNECTOR <Type A>

## Header



No. of circuits	Model No.	Dimensions (mm)		Q'ty/box
		A	B	
4	B04B-PWASK-1-C1	7.5	12.5	900
5	B05B-PWASK-1-C1	10.0	15.0	700
6	B06B-PWASK-1-C1	12.5	17.5	500
7	B07B-PWASK-1-C1	15.0	20.0	400
8	B08B-PWASK-1-C1	17.5	22.5	400
9	B09B-PWASK-1-C1	20.0	25.0	400
10	B10B-PWASK-1-C1	22.5	27.5	350
11	B11B-PWASK-1-C1	25.0	30.0	250
12	B12B-PWASK-1-C1	27.5	32.5	250
13	B13B-PWASK-1-C1	30.0	35.0	250
14	B14B-PWASK-1-C1	32.5	37.5	250

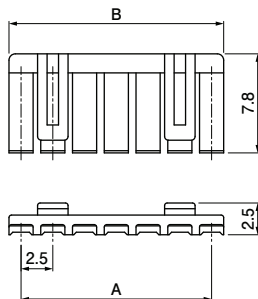
Material and Surface finish, etc.

Post: Copper alloy, tin-plated  
Base housing: PA (GF), natural

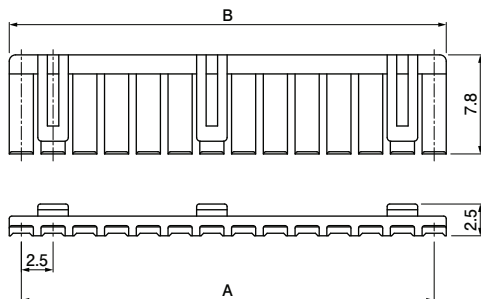
Note: For flame retardant grade of resin material used, please refer to the "List of Registered Overseas Standards" on our website (listed in the "Technical Documents" column on the Product Information page).

## Retainer

<4 to 13 circuits>



<14 circuits>



No. of circuits	Model No.	Dimensions (mm)		Q'ty/bag
		A	B	
4	PWASX-04V-K	7.5	9.4	1,000
5	PWASX-05V-K	10.0	11.9	1,000
6	PWASX-06V-K	12.5	14.4	1,000
7	PWASX-07V-K	15.0	16.9	1,000
8	PWASX-08V-K	17.5	19.4	1,000
9	PWASX-09V-K	20.0	21.9	1,000
10	PWASX-10V-K	22.5	24.4	1,000
11	PWASX-11V-K	25.0	26.9	1,000
12	PWASX-12V-K	27.5	29.4	1,000
13	PWASX-13V-K	30.0	31.9	1,000
14	PWAS-14V-K	32.5	34.4	1,000

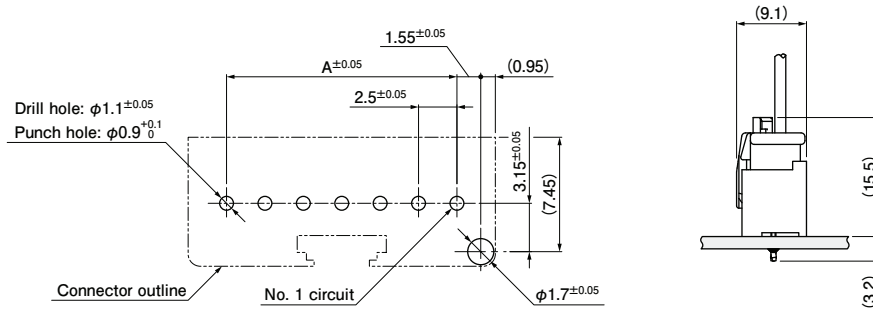
Material and Surface finish, etc.

PA (GF), black

Note: For flame retardant grade of resin material used, please refer to the "List of Registered Overseas Standards" on our website (listed in the "Technical Documents" column on the Product Information page).

# PW CONNECTOR <Type A>

## PC board layout and Assembly layout



- Note: 1. The PC board layout figure shown is viewed from the connector mounting surface.  
 2. Dimensions A: See "Header" section on page 3.  
 3. Tolerance for the PCB hole pitch shall be  $\pm 0.05$ , and shall not accumulate more than  $\pm 0.05$ .  
 The above dimensions are for reference only. Please contact JST for further details.

## Model number allocation

### Contact

**S XA - 001 T - P 0.6 L**

Supply form: Strip form	S	XA	001	T	P	0.6	L
Series name							
Applicable wire range: AWG #26 to AWG #22							
Surface finish: Tin-plated							
Material: Copper alloy							
Applicable post size							
Type: Low insertion force type							

### Housing

**PWA P - 04 V - WGL1 - ■**

Series name	PWA	P	04	V	WGL1	■
Type: Plug						
No. of circuits						
Sub model number						
Sub model number						
Color: No indication...Natural, E...Blue, R...Red, Y...Yellow, K...Black						

### Header

**B 04 B - PWA ■ K - 1 - C1**

Header type: Top entry type	B	04	B	PWA	■	K	1	C1
No. of circuits								
Assembly product								
Series name								
Color: S...Natural, E...Blue, R...Red, Y...Yellow, K...Black								
Clinched (Kinked) / Not clinched: Clinched								
Polarizing boss: With boss								
Sub model number								

### Retainer

**PWA S ■ - 04 V - K**

Series name	PWA	S	■	04	V	K
Type: Retainer						
Sub model number						
No. of circuits						
Sub model number						
Color: black						