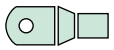
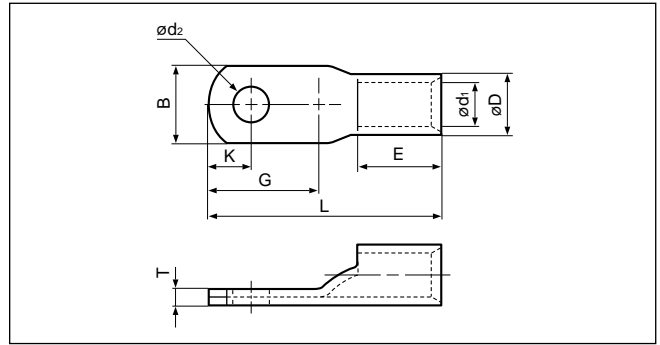
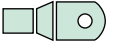


Solderless terminals



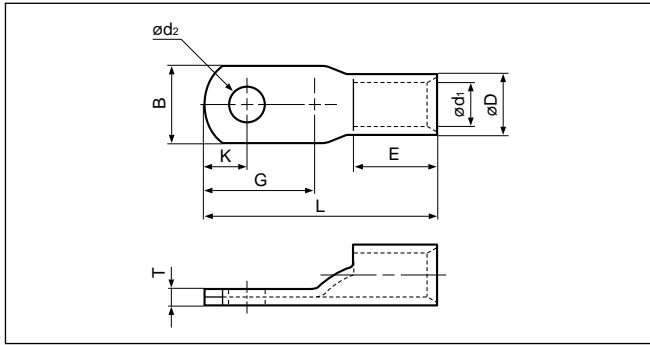
# COPPER TUBULAR LUGS (One-hole)



Applicable Wire AWG#(mm <sup>2</sup> )	Stud size		Part No.	Standard	Dimensions mm (in.)										Tool No.											Qty/box							
	American	Metric			$\phi d_2$	B	L	E	G	K	$\phi D$	$\phi d_1$	T	YHT-2210	YHT-8S	YA-1	YA-2	YA-4	YA-5	YPT-60N	YPT-150-1	BCT-0514L	BCT-860L	BCT-8150L	YET-60-1		E-4 YF-1 EP-1	YET-150-1	E-4 YF-1	YET-300-1	YET-300N		
16 to 14 (1.04 to 2.63)	8	4	TU2-4		4.3 (.169)	7.0 (.276)	20.0 (.787)	7.0 (.276)	9.5 (.374)	4.0 (.157)	4.0 (.157)	2.3 (.091)	1.3 (.051)	0	0	0	0			0													2,000
12 to 10 (2.63 to 6.64)	8	4	TU5.5-4		4.3 (.169)	9.0 (.354)	21.5 (.847)	8.5 (.335)	9.5 (.374)	4.0 (.157)	5.5 (.217)	3.4 (.134)	1.7 (.067)	0	0	0	0			0												1,000	
8 (6.64 to 10.52)	8	4	TU8-4		4.3 (.169)	10.0 (.394)	28.5(1.122)	11.0 (.433)	12.5 (.492)	5.8(.228)	7.1 (.280)	4.5 (.177)	2.4 (.095)	0						0												500	
	10	5	TU8-5		5.3 (.209)																												
6 (10.52 to 16.78)	10	5	TU14-5		5.3 (.209)	13.0 (.512)	34.0(1.339)	14.0 (.551)	14.5 (.571)	6.5(.256)	9.0 (.354)	5.8 (.228)	3.0 (.118)							0	0	0	0	0	0	0	0	0	0	0	0	250	
	1/4	6	TU14-6		6.4 (.252)															0	0	0	0	0	0	0	0	0	0	0	0		
	5/16	8	TU14-8		9.0 (.354)															0	0	0	0	0	0	0	0	0	0	0	0		
4 (16.78 to 26.66)	10	5	TU22-5		5.3 (.209)	16.0 (.630)	37.5(1.476)	15.0 (.591)	17.0 (.669)	7.0(.276)	11.4 (.449)	7.7 (.303)	3.6 (.142)						0	0	0	0	0	0	0	0	0	0	0	0	0	200	
	1/4	6	TU22-6		6.4 (.252)															0	0	0	0	0	0	0	0	0	0	0	0		
	5/16	8	TU22L-8		9.0 (.354)		39.5(1.555)		19.0 (.748)	8.5(.335)										0	0	0	0	0	0	0	0	0	0	0	0		
2 (26.66 to 42.42)	10	5	TU38-5		5.3 (.209)	19.0 (.748)	44.0(1.732)	18.0 (.709)	19.0 (.748)	8.5(.335)	13.3 (.524)	9.4 (.370)	3.8 (.150)						0	0	0	0	0	0	0	0	0	0	0	0	100		
	1/4	6	TU38-6		6.4 (.252)														0	0	0	0	0	0	0	0	0	0	0	0			
	5/16	8	TU38L-8		9.0 (.354)														0	0	0	0	0	0	0	0	0	0	0	0			
	3/8	10	TU38L-10		11.0 (.433)		48.5(1.909)		23.5 (.925)	11.0(.433)									0	0	0	0	0	0	0	0	0	0	0	0			
	1/2	12	TU38L-12		14.0 (.551)															0	0	0	0	0	0	0	0	0	0	0			
1/0 (42.42 to 60.57)	1/4	6	TU60-6		6.4 (.252)	22.0 (.866)	55.5(2.185)	20.0 (.787)	26.0(1.024)	10.5(.413)	15.4 (.606)	11.4 (.449)	4.0 (.157)						0	0	0	0	0	0	0	0	0	0	0	0	50		
	5/16	8	TU60-8		9.0 (.354)															0	0	0	0	0	0	0	0	0	0	0			
	3/8	10	TU60-10		11.0 (.433)															0	0	0	0	0	0	0	0	0	0	0			
	3/8	10	TU60L-10		11.0 (.433)															0	0	0	0	0	0	0	0	0	0	0			
	7/16	11	TU60L-11		12.0 (.472)		58.0(2.284)		28.5(1.122)	13.0(.512)										0	0	0	0	0	0	0	0	0	0	0			
1/2	12	TU60L-12		14.0 (.551)																0	0	0	0	0	0	0	0	0	0				
2/0 (60.57 to 76.28)	1/4	6	TU70-6		6.4 (.252)	25.0 (.984)	58.5(2.303)	22.0 (.866)	26.0(1.024)	10.5(.413)	17.5 (.689)	13.3 (.524)	4.3 (.169)						0		0										50		
	5/16	8	TU70-8		9.0 (.354)															0		0											
	3/8	10	TU70L-10		11.0 (.433)		62.0(2.441)		29.5(1.161)	13.5(.532)										0		0											
	1/2	12	TU70L-12		14.0 (.551)																0		0										
3/0 (76.28 to 96.3)	1/4	6	TU80-6		6.4 (.252)	27.5 (1.083)	65.0(2.559)	24.5 (.965)	28.5(1.122)	11.5(.453)	19.4 (.764)	14.5 (.571)	5.1 (.201)						0		0										25		
	5/16	8	TU80-8		9.0 (.354)															0		0											
	3/8	10	TU80-10		11.0 (.433)															0		0											
	3/8	10	TU80L-10		11.0 (.433)															0		0											
	7/16	11	TU80L-11		12.0 (.472)		69.0(2.717)		32.3(1.272)	13.5(.532)										0		0											
1/2	12	TU80L-12		14.0 (.551)																0		0											
4/0 (96.3 to 117.2)	5/16	8	TU100-8		9.0 (.354)	31.5 (1.240)	71.0(2.795)	25.5 (1.004)	31.3(1.232)	14.5(.571)	22.0 (.866)	16.4 (.646)	5.7 (.224)						0		0										25		
	3/8	10	TU100-10		11.0 (.433)															0		0											
	7/16	11	TU100M-11		12.0 (.472)		75.0(2.953)		35.3(1.390)											0		0											
	7/16	11	TU100L-11		12.0 (.472)		78.5(3.091)		38.8(1.528)											0		0											
	1/2	12	TU100M-12		14.0 (.551)		75.0(2.953)		35.3(1.390)	16.5(.650)										0		0											
	1/2	12	TU100L-12		14.0 (.551)		78.5(3.091)		38.8(1.528)											0		0											
	5/8	16	TU100M-16		18.0 (.709)		75.0(2.953)		35.3(1.390)											0		0											
5/8	16	TU100L-16		18.0 (.709)		78.5(3.091)		38.8(1.528)											0		0												

Note:1) Delivery lead times may vary depending on the product. Contact JST for details.

# COPPER TUBULAR LUGS (One-hole)



Applicable Wire AWG#(mm <sup>2</sup> )	Stud size		Part No.	Standard	Dimensions mm (in.)								Tool No.									Qty/box										
	American	Metric			ød <sub>2</sub>	B	L	E	G	K	øD	ød <sub>1</sub>	T	YHT-2210	YHT-8S	YA-1	YA-2	YA-4	YA-5	YPT-60N	YPT-150-1		BCI-0514L	BCT-860L	BCT-8150L	YE-4, YF-1 EP-1	E-4, YF-1	YET-150-1	YET-300-1	YET-300N		
250/300 (117.2 to 152.05)	3/8	10	TU150-10		11.0 (.433)	38.0 (1.496)	88.0(3.465)	34.5 (1.358)	36.3(1.429)	16.5 (.650)	26.5 (1.043)	19.5 (.768)	7.0 (.276)																			20
	7/16	11	TU150-11		12.0 (.472)																											
	1/2	12	TU150-12		14.0 (.551)																											
	5/8	16	TU150M-16		18.0 (.709)									95.5(3.760)	43.8(1.724)	20.0 (.787)																
	5/8	16	TU150L-16		18.0 (.709)									98.0(3.858)	46.3(1.823)																	
	3/4	20	TU150M-20		22.0 (.866)									95.5(3.760)	43.8(1.724)																	
	3/4	20	TU150L-20		22.0 (.866)									98.0(3.858)	46.3(1.823)																	
350 (152.05 to 192.60)	3/8	10	TU180-10		11.0 (.433)	41.0 (1.614)	92.0(3.622)	36.5 (1.437)	38.3(1.508)	16.5 (.650)	28.5 (1.122)	21.0 (.827)	7.7 (.303)																	10		
	7/16	11	TU180-11		12.0 (.472)																											
	1/2	12	TU180-12		14.0 (.551)																											
	5/8	16	TU180M-16		18.0 (.709)									104.0(4.095)	50.0(1.969)	22.5 (.886)																
400 (192.60 to 242.27)	1/2	12	TU200-12		14.0 (.551)	46.0 (1.811)	101.0(3.976)	37.0 (1.457)	46.3(1.823)	21.0 (.827)	32.5 (1.280)	24.0 (.945)	8.5 (.335)																	10		
	5/8	16	TU200M-16		18.0 (.709)									109.0(4.291)	54.0(2.126)																	
	3/4	20	TU200L-20		22.0 (.866)									113.0(4.449)	58.0(2.284)																	
600/650 (242.27 to 325)	3/8	10	TU325-10		11.0 (.433)	53.0 (2.087)	112.5(4.429)	42.0 (1.654)	51.8(2.039)	23.0 (.906)	37.0 (1.457)	28.0 (1.102)	9.0 (.354)																	10		
	7/16	11	TU325-11		12.0 (.472)																											
	1/2	12	TU325-12		14.0 (.551)																											
	5/8	16	TU325M-16		18.0 (.709)									121.0(4.764)	60.0(2.362)	29.0(1.142)																
	5/8	16	TU325L-16		18.0 (.709)									127.0(5.000)	66.0(2.598)																	

Note:1) Delivery lead times may vary depending on the product. Contact JST for details.

