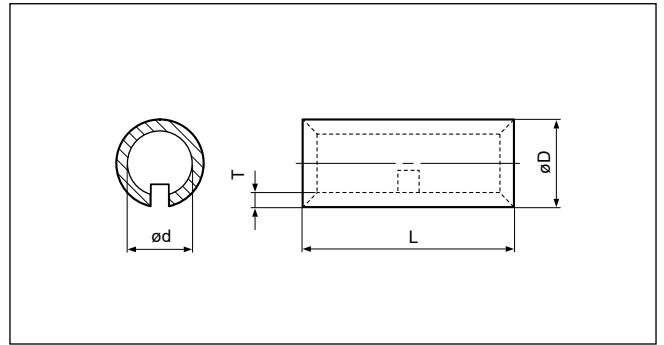


# COPPER TUBULAR



Applicable Wire AWG#	Part No.	Standard	Dimensions mm (in.)				Tool No.	Qty/box
			L	ø D	ø d	T		
13	<b>CZ-5</b>		15.0 (.590)	5.0 (.197)	3.3 (.129)	0.85(.033)	—	1,000
9	<b>CZ-7</b>		17.0 (.669)	5.5 (.217)	3.8 (.150)	0.85(.033)	—	
6	<b>CZ-14</b>		21.0 (.827)	7.8 (.307)	5.6 (.221)	1.1 (.043)	—	200
4	<b>CZ-26</b>		25.0 (.984)	9.5 (.374)	7.1 (.280)	1.2 (.047)	—	200
1	<b>CZ-40</b>		28.0(1.102)	11.0 (.433)	8.6 (.339)	1.2 (.047)	—	100
2/0	<b>CZ-60</b>		34.0(1.339)	14.0 (.551)	11.0 (.433)	1.5 (.058)	—	
4/0	<b>CZ-100</b>		41.0(1.614)	17.5 (.689)	13.5 (.531)	2.0 (.078)	—	50
300MCM	<b>CZ-130</b>		45.0(1.771)	20.0 (.787)	15.6 (.614)	2.2 (.086)	—	
380MCM	<b>CZ-160</b>		49.0(1.929)	22.0 (.866)	16.8 (.661)	2.6 (.102)	—	
480MCM	<b>CZ-200</b>		54.0(2.126)	25.4(1.000)	20.2 (.795)	2.6 (.102)	—	20

Note:1) Delivery lead times may vary depending on the product. Contact JST for details.