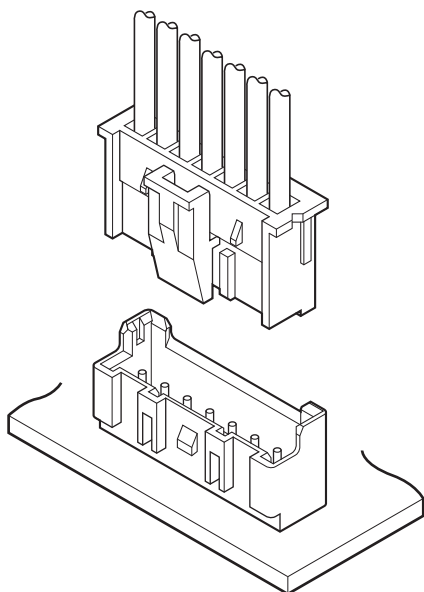


XA CONNECTOR

<Meets glow wire testing standards>

2.5 mm pitch/Wire-to-Board connectors/Crimp style and Mating style



- Meets glow wire testing standards
- Secure lock mechanism
- Solder crack prevention
- Low insertion force
- Insertion guide structure
- Polarizing boss

■ Specifications

- Current rating: 3 A AC/DC (AWG #22, AWG #20)
 - Voltage rating: 250 V AC/DC
 - Temperature range: -25°C to +105°C
(including temperature rise in applying electrical current)
 - Contact resistance:
 - Initial value/ 10 mΩ max.
 - After environmental tests/ 20 mΩ max.
 - Insulation resistance: 1,000 MΩ min.
 - Withstanding voltage:
 - There shall be no breakdown or flashover while applying 1,000 VAC for one minute.
 - Applicable wire range:
 - Conductor size/ AWG #28 to AWG #20
 - Insulation O.D. / ϕ 0.8 mm to ϕ 1.9 mm
 - Applicable PC board thickness: 1.6 mm
- * Please refer to the "Handling Precautions for Terminals and Connectors" on our website (listed in the "Technical Documents" column on the Product Information page) before use.
- * RoHS2 compliance
- * Dimensional unit: mm
- * Contact JST for Halogen-free product, etc.

■ Standards

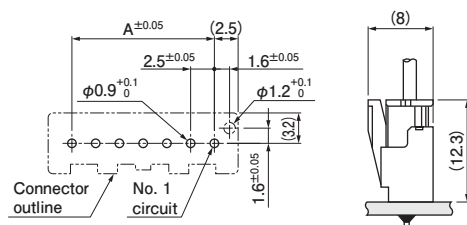
For information on overseas standard registrations, please refer to the "List of Registered Overseas Standards" on our website (listed in the "Technical Documents" column on the Product Information page).

* Specifications registered to overseas standards may differ from the general specifications listed above.

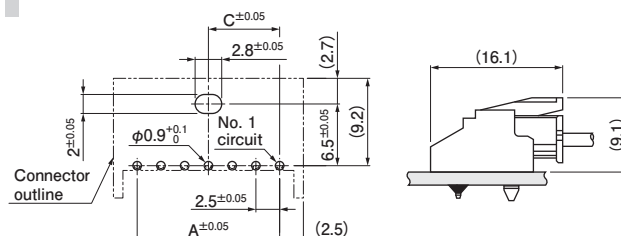
XA CONNECTOR <Meets glow wire testing standards>

PC board layout and Assembly layout

Top entry type

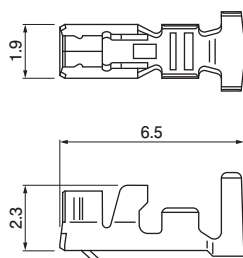


Side entry type



- Note: 1. The PC board layout figure shown is viewed from the connector mounting surface.
 2. Dimensions A and C: See "Header" section on page 4.
 3. Tolerance for the PCB hole pitch shall be ± 0.05 , and shall not accumulate more than ± 0.05 .
 4. Hole dimensions differ depending on the type of PCB and PCB drilling method.
 The above dimensions are for reference only. Please contact JST for further details.

Contact



Model No.	Applicable wire range		Q'ty/ reel
	Conductor size AWG (mm ²)	Insulation O.D. (mm)	
SXA-001T-P0.6	#28 to #22 (0.08 to 0.33)	0.8 to 1.9	8,000
SXA-01T-P0.6	#24 to #20 (0.22 to 0.5)	1.5 to 1.9	8,000
SXA-001T-P0.6L	#26 to #22 (0.13 to 0.33)	1.3 to 1.7	8,000

Material and Surface finish, etc.

Copper alloy, tin-plated

- Note: 1. SXA-001T-P0.6L is a low-insertion force type contact for easier insertion/withdrawal operation. Please take the application and environment into consideration as the low-insertion force type contact is less resistant to vibration. Please note that the crimp height is different from the standard XA contact.
 2. Contact JST for gold-plated products.

Crimping machine

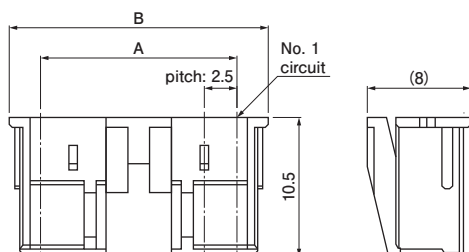
Contact	Crimping machine	Applicator	Crimp applicator with dies
SXA-001T-P0.6	AP-K2N	MKS-L	APLMK SXA/M001-06
SXA-01T-P0.6			APLMK SXA/M01-06
SXA-001T-P0.6L			APLMK SXA001-06L

Note: Contact JST for fully automatic crimping applicator.

XA CONNECTOR <Meets glow wire testing standards>

Housing

Retainer compatible



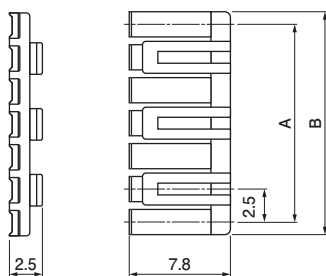
No. of circuits	Model No.	Dimensions (mm)		Q'ty/bag
		A	B	
2	XARP-02V-WGT4	2.5	7.3	1,000
3	XARP-03V-WGT4	5.0	9.8	1,000
4	XARP-04V-WGT4	7.5	12.3	1,000
5	XARP-05V-WGT4	10.0	14.8	1,000
6	XARP-06V-WGT4	12.5	17.3	1,000
7	XARP-07V-WGT4	15.0	19.8	1,000
8	XARP-08V-WGT4	17.5	22.3	1,000
9	XARP-09V-WGT4	20.0	24.8	1,000
10	XARP-10V-WGT4	22.5	27.3	1,000
11	XARP-11V-WGT4	25.0	29.8	1,000
12	XARP-12V-WGT4	27.5	32.3	1,000
13	XARP-13V-WGT4	30.0	34.8	1,000
14	XARP-14V-WGT4	32.5	37.3	1,000
15	XARP-15V-WGT4	35.0	39.8	1,000

Material and Surface finish, etc.

PA, natural (white)

Note: For flame retardant grade of resin material used, please refer to the "List of Registered Overseas Standards" on our website (listed in the "Technical Documents" column on the Product Information page).

Retainer



No. of circuits	Model No.	Dimensions (mm)		Q'ty/bag
		A	B	
2	XMS-02V	2.5	4.4	1,000
3	XMS-03V	5.0	6.9	1,000
4	XMS-04V	7.5	9.4	1,000
5	XMS-05V	10.0	11.9	1,000
6	XMS-06V	12.5	14.4	1,000
7	XMS-07V	15.0	16.9	1,000
8	XMS-08V	17.5	19.4	1,000
9	XMS-09V	20.0	21.9	1,000
10	XMS-10V	22.5	24.4	1,000
11	XMS-11V	25.0	26.9	1,000
12	XMS-12V	27.5	29.4	1,000
13	XMS-13V	30.0	31.9	1,000
14	XMS-14V	32.5	34.4	1,000
15	XMS-15V	35.0	36.9	1,000

Material and Surface finish, etc.

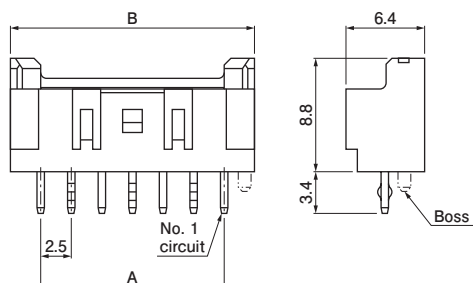
PA (GF), natural (ivory)

Note: For flame retardant grade of resin material used, please refer to the "List of Registered Overseas Standards" on our website (listed in the "Technical Documents" column on the Product Information page).

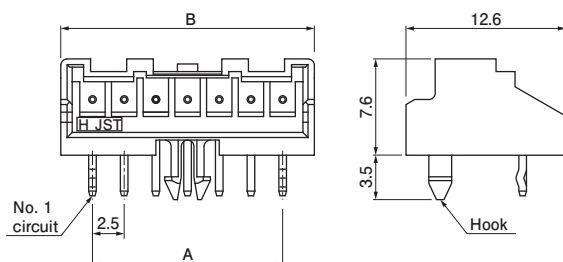
XA CONNECTOR <Meets glow wire testing standards>

Header

Top entry type



Side entry type with hook



Top entry type

No. of circuits	Model No.		Dimensions (mm)		Q'ty/box
	Without boss	With boss	A	B	
2	B02B-XASK-1	B02B-XASK-1-A	2.5	7.5	1,000
3	B03B-XASK-1	B03B-XASK-1-A	5.0	10.0	400
4	B04B-XASK-1	B04B-XASK-1-A	7.5	12.5	400
5	B05B-XASK-1	B05B-XASK-1-A	10.0	15.0	400
6	B06B-XASK-1	B06B-XASK-1-A	12.5	17.5	400
7	B07B-XASK-1	B07B-XASK-1-A	15.0	20.0	250
8	B08B-XASK-1	B08B-XASK-1-A	17.5	22.5	250
9	B09B-XASK-1	B09B-XASK-1-A	20.0	25.0	250
10	B10B-XASK-1	B10B-XASK-1-A	22.5	27.5	250
11	B11B-XASK-1	B11B-XASK-1-A	25.0	30.0	200
12	B12B-XASK-1	B12B-XASK-1-A	27.5	32.5	200
13	B13B-XASK-1	B13B-XASK-1-A	30.0	35.0	100
14	B14B-XASK-1	B14B-XASK-1-A	32.5	37.5	100
15	B15B-XASK-1	B15B-XASK-1-A	35.0	40.0	100

Material and Surface finish, etc.

Pin: Copper alloy, tin-plated
Base housing: PA (GF), natural (ivory)

- Note: 1. This product displays (LF)(SN) on a label.
2. Contact JST for gold-plated products.
3. For flame retardant grade of resin material used, please refer to the "List of Registered Overseas Standards" on our website (listed in the "Technical Documents" column on the Product Information page).

Side entry type with hook

No. of circuits	Model No.	Dimensions (mm)			Q'ty/box
		A	B	C	
2	S02B-XASS-1	2.5	7.5	1.25	250
3	S03B-XASK-1	5.0	10.0	2.50	250
4	S04B-XASK-1	7.5	12.5	3.75	200
5	S05B-XASK-1	10.0	15.0	5.00	200
6	S06B-XASK-1	12.5	17.5	6.25	200
7	S07B-XASK-1	15.0	20.0	7.50	200
8	S08B-XASK-1	17.5	22.5	8.75	100
9	S09B-XASK-1	20.0	25.0	10.00	100
10	S10B-XASK-1	22.5	27.5	11.25	100
11	S11B-XASK-1	25.0	30.0	12.50	100
12	S12B-XASK-1	27.5	32.5	13.75	100
13	S13B-XASK-1	30.0	35.0	15.00	100
14	S14B-XASK-1	32.5	37.5	16.25	100

Material and Surface finish, etc.

Pin: Copper alloy, tin-plated
Base contact: PA (GF), natural (ivory)

- Note: 1. This product displays (LF)(SN) on a label.
2. Contact JST for gold-plated products.
3. Dimension C: See "PC board layout" section on page 2.
4. For flame retardant grade of resin material used, please refer to the "List of Registered Overseas Standards" on our website (listed in the "Technical Documents" column on the Product Information page).