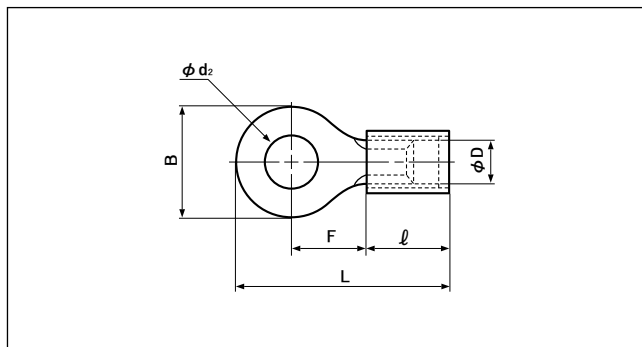




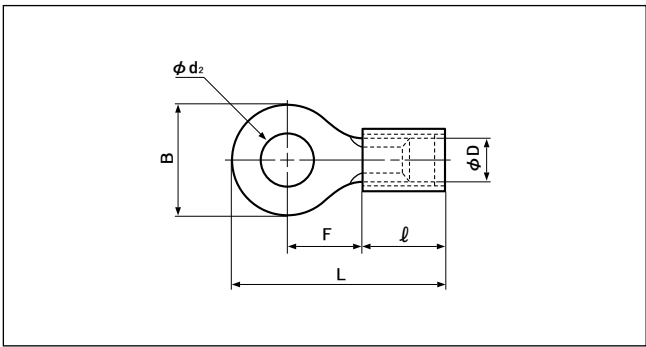
銅スリーブ入絶縁付丸形端子(ストレート形)



UL LISTED E42024 SP LR20812

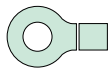
形番	規格	寸法(mm)							色	適用電線範囲	適用圧着工具			1箱 入数 (個)		
		φd2	B	L	F	ℓ	φD	板厚		撚線(mm ²)	手動	空気圧式	油圧式			
VD0.5-2	UL SP	2.2	5.2	16.4	5.8	8.0	2.2	0.5	黄	0.2~0.5 0.2 (AWG#24) 0.3 (AWG#22) 0.5	YNT-2622	YA-1, YAT-1A YA-2, YAT-2A YAD-1A YAD-2A	BCT-0514L	1,000		
VD0.5-3	UL SP	3.2			7.7											
VD0.5-4	UL SP	4.3			6.6										19.0	7.0
VD0.5-5	UL SP	5.3			8.0										7.0	
VD1.25-3	UL SP	3.2	5.5	16.3	4.0	9.6	3.5	0.8	赤	0.25~1.65 0.3 (AWG#22) 0.5 (AWG#20) 0.75 (AWG#18) 0.9 1.25 (AWG#16)	YNT-2216	YA-1 YA-2 YAT-1A YAT-2A YAD-1A YAD-2A YA-4 YAT-4A YAD-4A	BCT-0514L	1,000		
VD1.25-MS3	UL SP			18.0	5.6											
VD1.25-L3	UL SP			8.0	20.6										7.0	
VD1.25-3.7	UL SP			5.5	16.3										4.0	
VD1.25-M3	UL SP	4.3	6.6	19.2	6.3	9.6	4.1	0.8	青	1.04~2.63 1.25 (AWG#16) 2.0 (AWG#14)	YNT-1614	YA-1 YA-2 YAT-1A YAT-2A YAD-1A YAD-2A YA-4 YAT-4A YAD-4A	BCT-0514L	1,000		
VD1.25-M4	UL SP														8.0	20.6
VD1.25-4	UL SP	5.3	8.0	20.6	7.0	9.6	4.1	0.8	青	1.04~2.63 1.25 (AWG#16) 2.0 (AWG#14)	YNT-1614	YA-1 YA-2 YAT-1A YAT-2A YAD-1A YAD-2A YA-4 YAT-4A YAD-4A	BCT-0514L	1,000		
VD1.25-5	UL SP	8.4	11.6	26.5	11.1											
VD1.25-8	UL SP	10.5	13.6	30.3	13.9											
VD1.25-10	UL SP	3.2	5.5	18.0	5.6											
VD2-MS3	UL SP	3.2	6.4	17.1	4.3	9.6	4.1	0.8	青	1.04~2.63 1.25 (AWG#16) 2.0 (AWG#14)	YNT-1614	YA-1 YA-2 YAT-1A YAT-2A YAD-1A YAD-2A YA-4 YAT-4A YAD-4A	BCT-0514L	1,000		
VD2-S3.3	UL SP														6.4	17.1
VD2-S3	UL SP	3.7	7.0	20.8	7.7											
VD2-P3.5	UL SP	6.6	19.2	6.3												
VD2-M3	UL SP	4.3	6.6	19.2	6.3	9.6	4.1	0.8	青	1.04~2.63 1.25 (AWG#16) 2.0 (AWG#14)	YNT-1614	YA-1 YA-2 YAT-1A YAT-2A YAD-1A YAD-2A YA-4 YAT-4A YAD-4A	BCT-0514L	1,000		
VD2-M4	UL SP														8.5	21.6
VD2-4	UL SP	5.3	9.5	7.3												
VD2-M5	UL SP	6.4	12.0	26.6	11.0											
VD2-5	UL SP	8.4	12.0	26.6	11.0	9.6	4.1	0.8	青	1.04~2.63 1.25 (AWG#16) 2.0 (AWG#14)	YNT-1614	YA-1 YA-2 YAT-1A YAT-2A YAD-1A YAD-2A YA-4 YAT-4A YAD-4A	BCT-0514L	1,000		
VD2-6	UL SP	6.4	12.0	26.6	11.0											
VD2-8	UL SP	8.4	12.0	26.6	11.0	9.6	4.1	0.8	青	1.04~2.63 1.25 (AWG#16) 2.0 (AWG#14)	YNT-1614	YA-1 YA-2 YAT-1A YAT-2A YAD-1A YAD-2A YA-4 YAT-4A YAD-4A	BCT-0514L	1,000		
VD2-14	UL SP	15.0	27.0	44.3	21.2											

注1) 本製品の中には多少納期を要するものもあります。
 注2) VD0.5-()におけるUL登録の適用電線はAWG#26~AWG#22です。

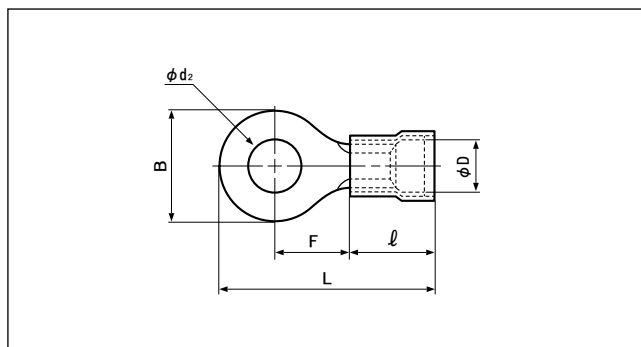


形番	規格	寸法(mm)							色	適用電線範囲	適用圧着工具			1箱 入数 (個)
		φd2	B	L	F	l	φD	板厚		燃線(mm ²)	手動	空気圧式	油圧式	
VD5.5-3		3.2	9.5	27.0	8.3	14.0	5.7	1.0	黄	2.63~6.64 { 3.5 (AWG#12) 5.5 (AWG#10) }	YNT-1210S	YA-4 YAT-4A YAD-4A	BCT-0514L	500
VD5.5-S4		4.3	7.2	23.5	5.9									
VD5.5-4			9.5	27.0	8.3									
VD5.5-5		5.3	12.0	33.0	13.0									
VD5.5-6		6.4												
VD5.5-8		8.4	15.0	35.2	13.7									
VD5.5-10		10.5												
VD5.5-14		15.0	32.0	55.3	25.3									
VD5.5-18		19.0												

注) 本製品の中には多少納期を要するものもあります。



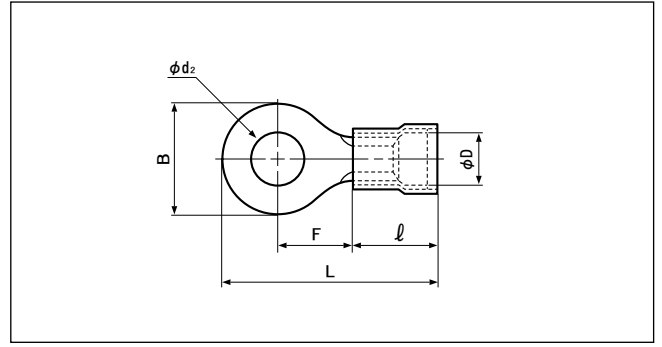
■銅スリーブ入絶縁付丸形端子(F形)


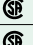

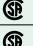



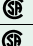




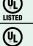

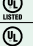
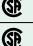


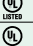






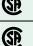

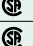

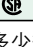


UL LISTED E42024 LR20812

形番	規格	寸法(mm)							色	適用電線範囲 撚線(mm ²)	適用圧着工具			1箱 入数 (個)	
		φd2	B	L	F	ℓ	φD	板厚			手動	空気圧式	油圧式		
FVD0.5-2		2.2	5.2	16.7	5.8	8.3	2.5	0.5	黄	0.2~0.5 (0.2 (AWG#24) 0.3 (AWG#22) 0.5)	YNT-2622	YA-1,YAT-1A YA-2,YAT-2A YAD-1A YAD-2A	BCT-0514L	1,000	
FVD0.5-3		3.2													
FVD0.5-4		4.3	19.3	7.7											
FVD0.5-5		5.3			7.0										
FVD1.25-3		3.2	5.5	16.3	4.0	9.6	4.0	0.8	赤	0.25~1.65 (0.3 (AWG#22) 0.5 (AWG#20) 0.75(AWG#18) 0.9 1.25(AWG#16))	YNT-2216	YA-1 YA-2 YAT-1A YAT-2A YAD-1A YAD-2A YA-4 YAT-4A YAD-4A	BCT-0514L	1,000	
FVD1.25-MS3			18.0	5.6											
FVD1.25-L3		8.0	20.6	7.0											
FVD1.25-3.7		3.7	5.5	16.3	4.0										
FVD1.25-M3			6.6	19.2	6.3										
FVD1.25-M4		4.3	8.0	20.6	7.0										
FVD1.25-4															
FVD1.25-5		5.3	11.6	26.5	11.1										
FVD1.25-6		6.4													
FVD1.25-8		8.4	13.6	30.3	13.9										
FVD1.25-10		10.5													
FVD2-MS3		3.2	5.5	18.0	5.6	9.6	4.7	0.8	青	1.04~2.63 (1.25 (AWG#16) 2.0 (AWG#14))	YNT-1614	YA-1 YA-2 YAT-1A YAT-2A YAD-1A YAD-2A YA-4 YAT-4A YAD-4A	BCT-0514L	1,000	
FVD2-S3.3			6.4	17.1	4.3										
FVD2-3			8.5	21.6	7.8										
FVD2-S3		3.7	6.4	17.1	4.3										
FVD2-M3			6.6	19.2	6.3										
FVD2-M4		4.3	7.0	20.8	7.7										
FVD2-P4															
FVD2-4		5.3	8.5	21.6	7.8										
FVD2-M5			9.5												7.3
FVD2-5		6.4	12.0	26.6	11.0										
FVD2-6		8.4													
FVD2-8		8.4	13.6	30.3	13.9										
FVD2-10		10.5													
FVD2-12		13.0	19.0	35.8	16.7	27.0	44.3	21.2							
FVD2-14		15.0													
FVD2-20		21.0												500	
															250

注1) 本製品の中には多少納期を要するものもあります。
 注2) FVD0.5-()におけるUL登録の適用電線はAWG#26~AWG#22です。



形番	規格	寸法(mm)						色	適用電線範囲		適用圧着工具			1箱 入数 (個)
		φd2	B	L	F	ℓ	φD		板厚	燃線 (mm ²)	手動	空気圧式	油圧式	
FVD5.5-3	 	3.2	9.5	27.0	8.3	14.0	6.5	1.0	黄	2.63~6.64 〔3.5 (AWG#12)〕 〔5.5 (AWG#10)〕	YNT-1210S	YA-4 YAT-4A YAD-4A	BCT-0514L	500
FVD5.5-S3	 	3.7	7.2	23.5	5.9									
FVD5.5-S4	 	4.3	9.5	27.0	8.3									
FVD5.5-4	 													
FVD5.5-5	 	5.3	12.0	33.0	13.0									
FVD5.5-6	 	6.4												
FVD5.5-S6	 	8.4	13.2	29.6	9.0									
FVD5.5-S8	 													
FVD5.5-8	 	15.0	35.2	13.7										
FVD5.5-10	 	10.5	19.2	39.6	16.0									
FVD5.5-12	 	13.0												
FVD5.5-14	 	15.0	32.0	55.3	25.3									
FVD5.5-16	 	17.0												
FVD5.5-18	 	19.0												
FVD5.5-20	 	21.0												

注) 本製品の中には多少納期を要するものもあります。